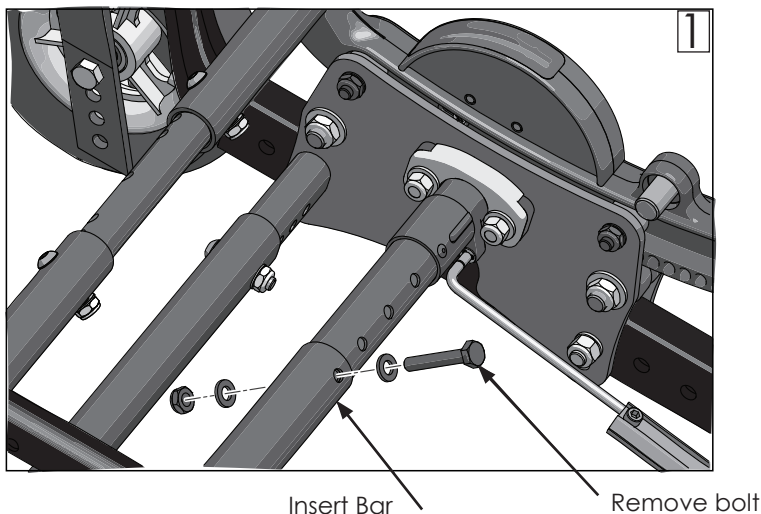




IRIS AND ZIPPIE IRIS ROCKER PIN RELEASE REPLACEMENT INSTRUCTION SHEET



Please read these instructions carefully before beginning the assembly. Failure to understand and follow assembly instructions may result in injury to technician and/or end user and may void the warranty. If you have any questions call Sunrise Medical Technical Support at +1 (800) 333-4000.



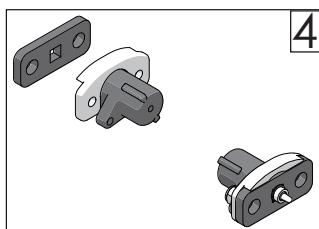
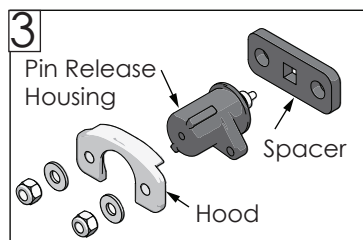
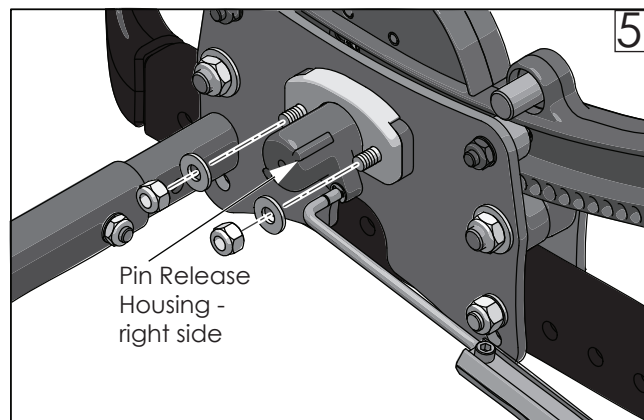
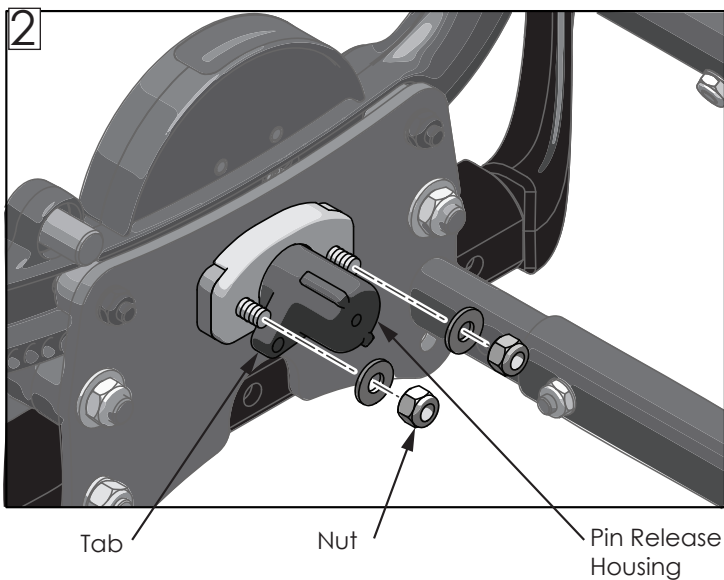
The following assembly instructions are for replacing the Iris pin releases for the foot lock on the Iris rocker assembly.

To replace Pin Releases:

1. Remove bolt, nut, and washers from the cross brace (Fig 1). Note which hole bolt was in, and save hardware.
2. Slide insert bar to the left, remove cross brace assembly from chair, set aside (Fig 1).
3. Remove nuts from pin release housing on left side of chair only (Fig 2). Remove housing and discard. Save hardware (nuts, washers, spacers) (Fig 3).

WARNING: replace one side at a time. If both sides are removed, rocker will be free to move resulting in possible injury.

4. Slide new left pin release housing over bolts on rocker assembly. Make sure tab is oriented downward (Fig 2). Slide spacers over bolts making sure lip of spacer is over lip of housing (Fig 4). Secure with washers and nuts, tighten securely.
5. Remove nuts from pin release housing on right side of chair (Fig 5).



Sunrise Medical 2842 N. Business Park Ave Fresno, CA 93727 USA

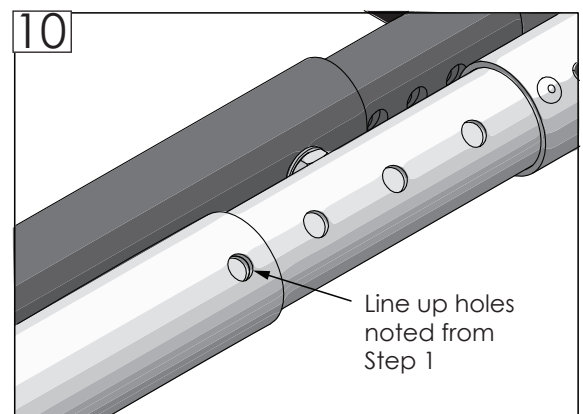
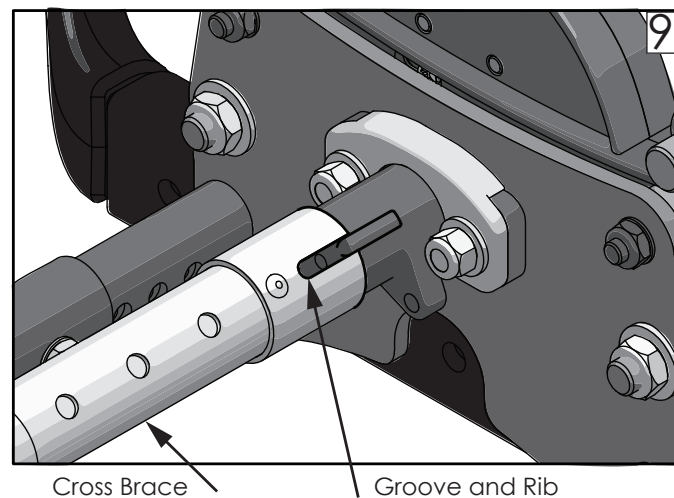
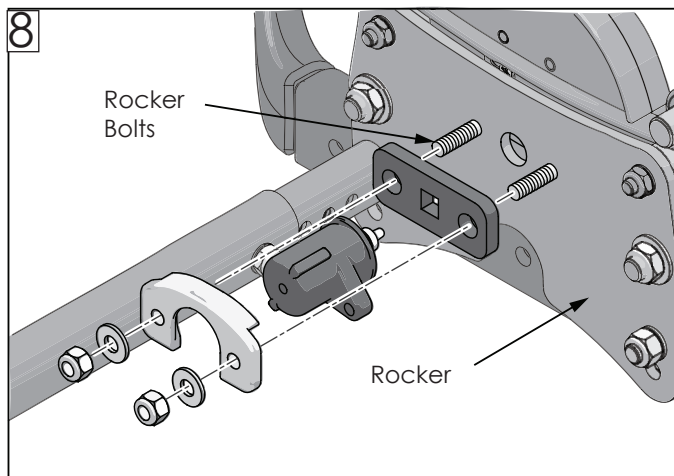
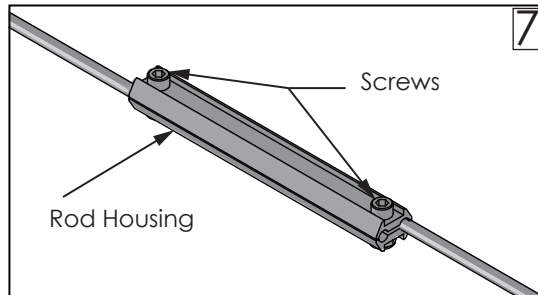
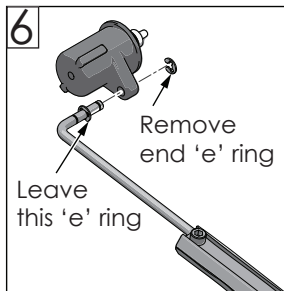
Customer service: +1(800) 333-4000
or visit www.SunriseMedical.com

© 2020 Sunrise Medical (US) LLC
07/2020 108769 Rev. B Page 1 of 2





Please read these instructions carefully before beginning the assembly. Failure to understand and follow assembly instructions may result in injury to technician and/or end user and may void the warranty. If you have any questions call Sunrise Medical Technical Support at +1 (800) 333-4000.



To replace Pin Releases (continued):

6. Remove end 'e' ring and pin housing from rod, discard (Fig 6). Rod may be removed from rod housing for easier access to 'e' ring. First note location of housing on the rods, then loosen screws and remove rod (Fig 7).
7. Slide new right side pin housing onto rod and secure with new 'e' ring provided.
8. Slide pin housing and spacers over bolts on rocker (Fig 8). Make sure lip of spacer fits securely over lip of housing (Fig 4). Secure with saved nuts and brass washers. Tighten securely.
9. Slide rod back into housing at marked location, if necessary, and retighten screws on rod housing (Fig 7).
10. Slide cross brace assembly over pin housing on left side making sure grooves of brace fit around housing ribs (Fig 9).
11. Slide insert bar to the right, see Step 2 and Fig 1, over right side pin housing lining up groove and rib.
12. Align holes on cross brace and insert (Fig 10). Secure with saved bolt, washers, and nut from Step 1.
13. Make sure all nuts and bolts are tightened securely.

⚠️ DEALER/TECHNICIAN WARNING

Attention dealers and qualified technicians, do not operate or service this device without first reading the owners manual. If you do not understand the instructions and warnings in the owners manual please contact the Quickie Technical Service Department before operating and/or servicing the Quickie device. Failure to do so may result in damage and/or injury.

Find more information and important warnings see the wheelchair owner's manual or at: www.SunriseMedical.com.

Sunrise Medical 2842 N. Business Park Ave Fresno, CA 93727 USA