



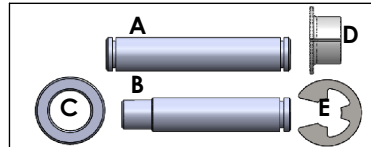
SEDEO PRO SEAT TILT ACTUATOR REPLACEMENT INSTRUCTION SHEET



Please read these instructions carefully before beginning the installation. Failure to understand and follow installation instructions may result in injury to installer and/or end user and may void the warranty. If you have any questions call Sunrise Medical Technical Support at 800-333-4000.

Actuator parts:

- | | |
|------------------------------|--------------------|
| 1. 1 ea Front pivot bolt (B) | 5. 3 ea E-clip (E) |
| 2. 1 ea Rear pivot bolt (A) | 6. 1 ea Actuator |
| 3. 4 ea Plastic washer (C) | |
| 4. 3 ea Split bushing (D) | |



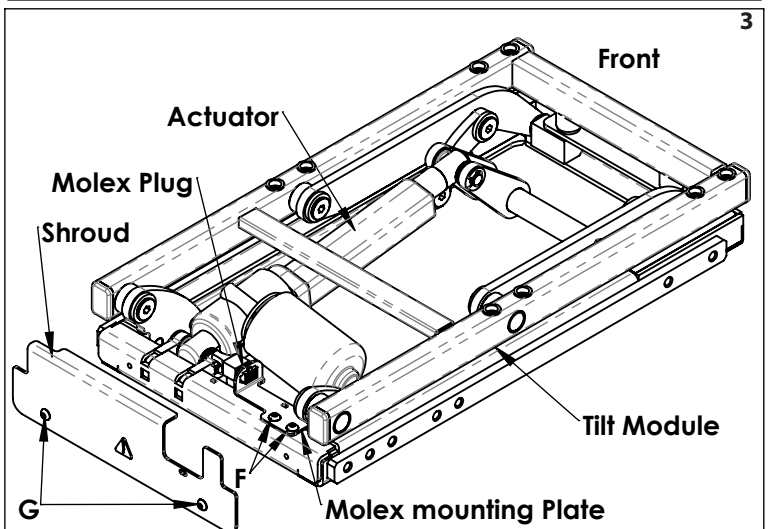
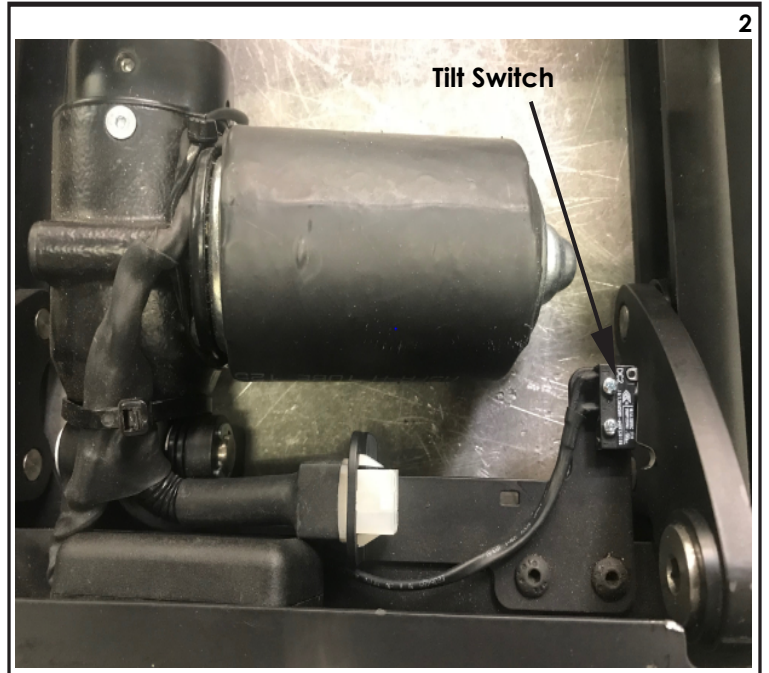
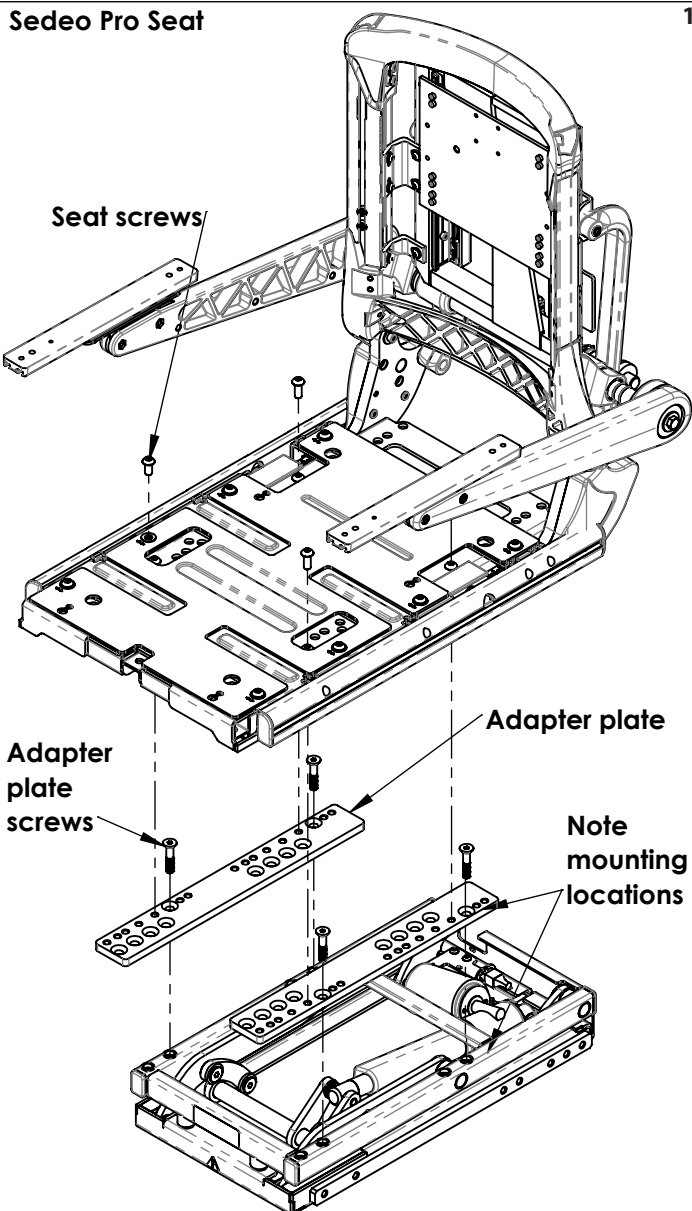
Required tools:



1. 3mm hex key
2. 5mm hex key
3. Pliers
4. Torque wrench
5. Small Phillips head screwdriver

A. REMOVE ACTUATOR:

1. Unplug Molex harness(not shown), from Molex plug (Fig 2 and 3), AND any other harness that could get damaged when removing the seat, in steps 2 and (Fig 1).
2. Remove the 4 seat screws holding the seat to the adapter plate.(Use 5mm hex key) NOTE: before removing the seat, mark the mounting hole locations for the seat and the adapters. (Fig 1)
3. Remove the adapter plate screws from the tilt module and again , mark the hole locations before removing. (Use 5mm hex key) (Fig 1)
4. Remove the 2 screws holding the tilt shroud (G) then remove the shroud (Fig 3).Save the hardware. Use 3mm hex key

Sedeo Pro Seat

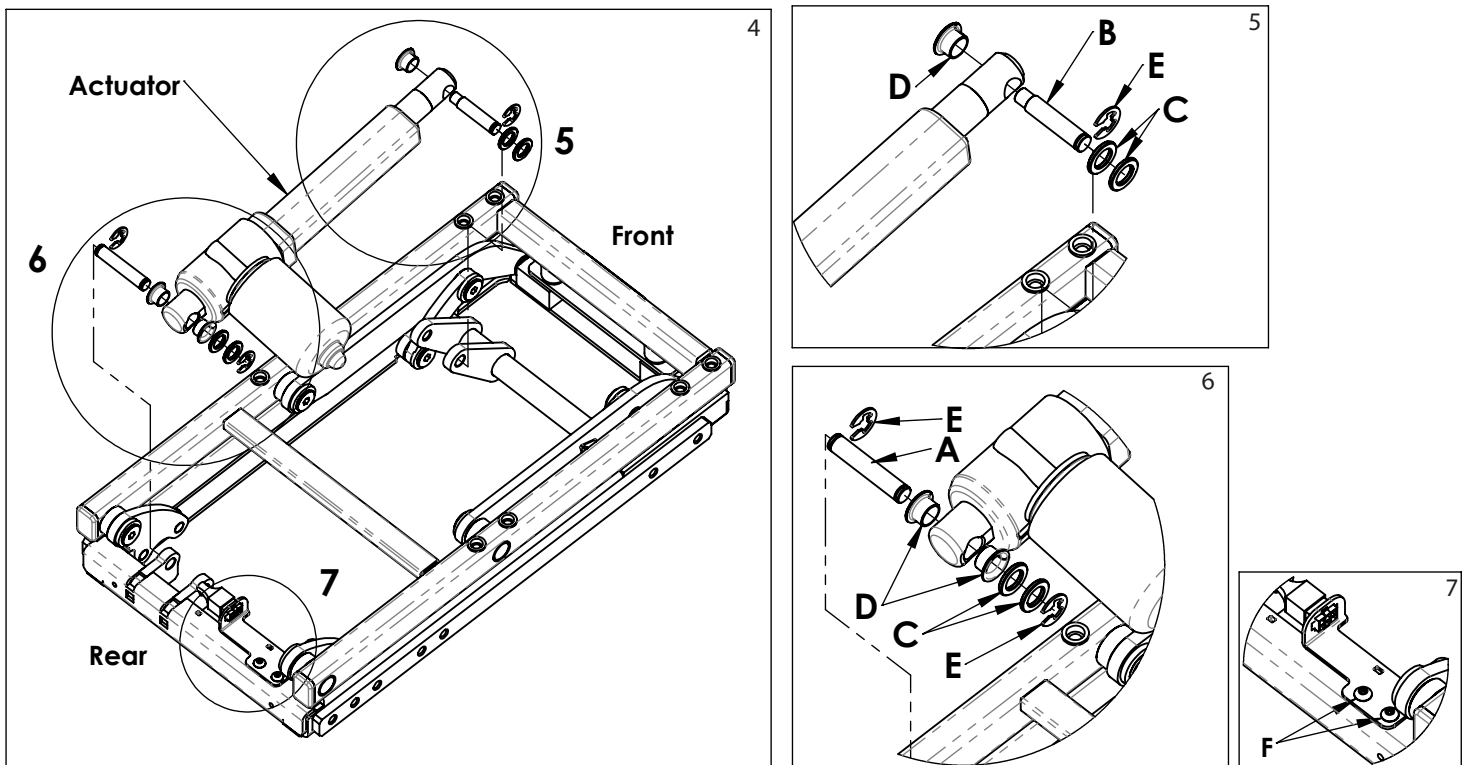


- A. **REMOVE ACTUATOR (Continued):**
- Remove tilt switch from the molex mounting plate with small Phillips screwdriver. Save the hardware(Fig 2).
 - Remove the 2 screws (F) holding the molex mounting plate and remove the molex connector. Save the mounting plate and screws. The Molex connector is part of the actuator.(Fig 3) (Use 3mm hex key)
 - Remove E-clips (E) from the front and rear pivot bolts (A & B) using pliers. (Fig 5 and 6) Note- It will be easier to remove the clips if the module is in the tilt position.
 - Remove pivot bolts, discard hardware.
 - Remove the actuator from the tilt module. If under warranty, return to Sunrise Medical. Otherwise discard.
- B. **INSTALL NEW ACTUATOR:**
- Install bushings (D) into the actuator. (Fig 5 and 6)
 - Install actuator into the tilt module.
 - Slide pivot bolts through mounting holes in the module, add washer (C) and E-clips(E). (Fig 5 and 6) Note- E-clips will be the only hardware on the outside of the tilt module mounting holes.
 - Re-attach Molex mounting plate and screws, saved from step 5, during actuator removal(F). (Fig 7) (Use 3mm hex key) Torque to 27-32 in-lbs
 - Re-attach tilt switch at the setting for 16 degrees, using the saved hardware from section A, step 5. (Fig 2) 
 - Re-install shroud with saved screws(G) (Fig 3) (Use 3mm hex key) Torque to 27-32 in-lbs
 - Re-install adapter plate to module and seat to adapter with saved hardware from Steps 2 & 3 in section A. (Fig 1) Torque to 60-70 in-lbs(13.6-14.9Nm). (Use 5mm hex key)
 - Plug Molex harness(not shown) back into the Molex plug(Fig 2 & 3), as well as the Bus connector.
- C. **INSPECT:**
- All torque values with a torque wrench. 
 - Seating system to ensure all wire harnesses are out of the way and are not getting pinched.
 - Seating system to verify that the harnesses are not put under tension in any position.
 - Ensure that the cable-ties are not so tight that they deform cable jackets.
 - Where possible cables should be protected and hidden by shrouds.

DEALER/TECHNICIAN WARNING  **WARNING**

Attention dealers and qualified technicians, do not operate or service this device without first reading the owners manual. If you do not understand the instructions and warnings in the owners manual please contact the Quickie Technical Service Department before operating and/or servicing the Quickie device. Failure to do so may result in damage and/or injury.

Find more information and important warnings see the wheelchair owner's manual or at: www.Sunrisemedical.com.



Sunrise Medical 2842 N. Business Park Ave Fresno, CA 93727 USA
In Canada (800) 263-3390