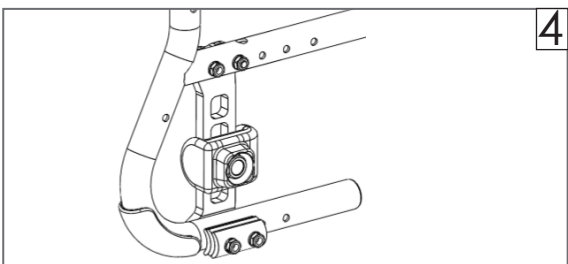
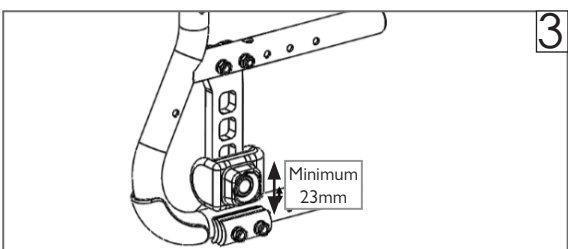
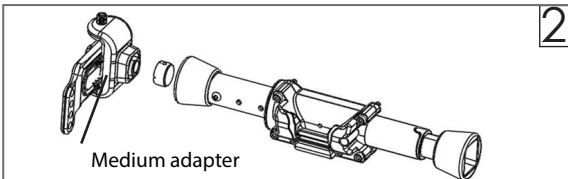
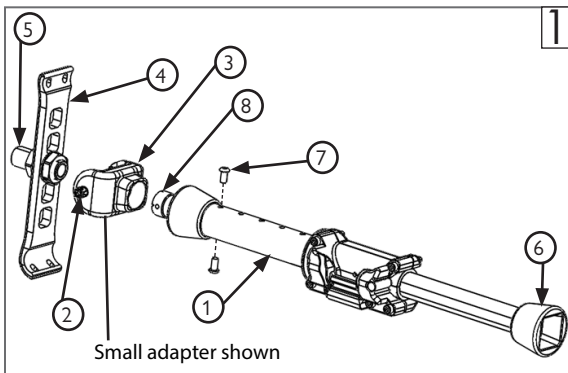




Please read these instructions carefully before beginning the assembly. Failure to understand and follow assembly instructions may result in injury to technician and/or end user and may void the warranty. If you have any questions call Sunrise Medical Technical Support at +1 (800) 333-4000.

Tools required

1. 4mm allen wrench
2. 5mm allen wrench
3. Tape measure



For Folding Frame wheelchairs

Note: Folding axle adapters will be attached to camber tube but will require adjustment to center on camber tube.

Note: Folding Frame wheelchairs always use the small 32mm clamps without inserts.

A. Attaching small/large folding axle adapters and hardware onto wheelchairs:

1. Using 5mm allen wrench, attach Folding Axle Adapters (3) and hardware (2) onto Axle Plates (4). Folding Axle Adapters must be centered over the Axle Sleeve (5).

Note: The Folding Axle Adapter (3) requires the Axle Sleeve (5) to be a minimum distance of approximately 23mm from the frame. If the Folding Axle Adapter (3) does not fit as shown in Fig 3, the CG (center of gravity) will need to be adjusted to the next available CG position as shown in Fig. 4.

2. Tighten hardware on one side. Leave one side loose. Follow Step 2 to align Folding Axle Adapter with Folding Axle. Once properly aligned, tighten loose side.

3. Tighten hardware (2) to 15 Nm [11 ft-lb].

Note: Folding Axle Adapter (3) can be flipped to more easily access the set screw. Mount the Folding Axle Adapter (3) in an orientation so access to set screw is in the desired location.

B. Attaching folding axle to wheelchair:

1. Grab the folding axle assembly (1) in the middle of the assembly. Grab the outside of the larger tube to avoid pinching your hand while attaching the assembly.
2. Slide the axle adapter receiver (6) over the folding axle adapter (3) on one side.
3. Compress the folding axle assembly (1) until you are able to slide the other axle adapter receiver (6) over the corresponding folding axle adapter (3).
4. Check to ensure the folding axle assembly (1) is securely compressed between the wheelchair's two axle plates (4).

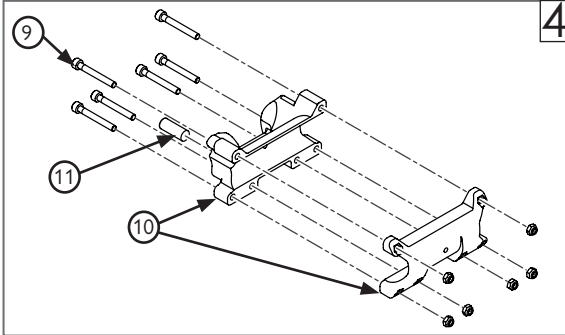


DEALER/TECHNICIAN WARNING

Attention dealers and qualified technicians, do not operate or service this device without first reading the owners manual. If you do not understand the instructions and warnings in the owners manual please contact the Sunrise Medical Technical Service Department before operating and/or servicing the Empulse device. Failure to do so may result in damage and/or injury.

Find more information and important warnings in the device owner's manual or at: www.SunriseMedical.com.

Sunrise Medical 2842 N. Business Park Ave Fresno, CA 93727 USA



C. Attaching the receiving mount and hardware onto wheelchair:

1. Attach the hardware (9) with 4mm allen wrench and tighten the screws until they barely allow the clamp (10) to rotate and slide transversely.
2. Move the clamp to the center of the camber tube by measuring from the clamp edge to the side frame of both sides and ensure the distance is the same.
3. Rotate the clamp until level bubble (11) is centered and slightly back so that when weight is added on the chair, the level bubble will be centered.
4. Tighten all six fasteners (9) to 7.8 Nm [5.8 ft-lbs].



D. Removing folding axle assembly:

1. Ensure the power assist module is already removed from the folding axle assembly (1).
2. Grab the folding axle assembly (1) and compress the larger tube toward the smaller tube until the axle adapter receiver (1) is free of the folding axle adapter (3).
3. Pull the folding axle assembly (1) toward the rear of the chair.

E. Removing the folding axle adapter and hardware from folding axle assembly (1):

1. Remove hardware (2).
2. Remove folding axle adapters (3) and hardware (2) from axle plates (4).

F. Adjusting Folding Axle Spring Force

1. Remove both screws (7) using 3mm allen wrench. Use screwdriver to keep Spring Stop (8) from falling out.
2. To increase spring force move Spring Stop (8) to new hole location closer to center of assembly. Use screwdriver to align Spring Stop (8) with hardware (7).
3. Attach both screws (7) to properly hold Spring Stop (8).
4. Attach Folding Axle Assembly (1) onto chair to check spring force. Adjust as necessary.