



Please read these instructions carefully before beginning the assembly. Failure to understand and follow assembly instructions may result in injury to technician and/or end user and may void the warranty. If you have any questions call Sunrise Medical Technical Support at +1 (800) 333-4000.

Chairs



Nitrum

7R



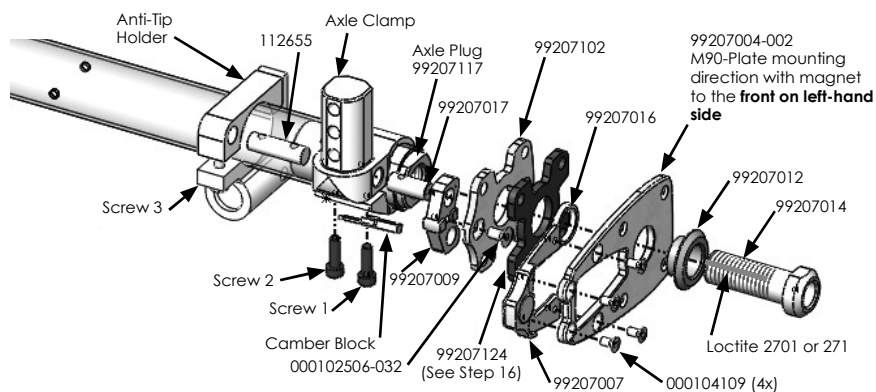
Zippy Zone

Parts

99207004-001	M90-Plate Weldment non-Magnet Version	1
99207004-002	M90-Plate Weldment Magnet Version	1
99207007	Magnet Bracket Assy.	1
000104109	FHCS ISO7046 M4x8 A2 ZNS NP	4
99207014	Axle sleeve 55,6 mm M16x1	2
99207012	Cone bushing	2
99207102	Torque support plate	2
99207017	Roundnut	2
99207009	Torque support	2
99207016	Bushing	2
99207117	Axle plug 0 Deg / 64 mm / M16x1	2
99207124	Torque support plate spacer 4 mm	2
112653	Roundnut	2
000102506-032	FHCS ISO10642 M5x10 8.8 ZN NP	2

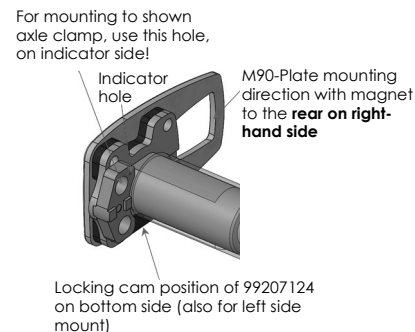
Mount with magnet, on chair left-hand side

1



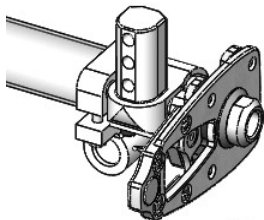
Mount without magnet, on chair right-hand side

2



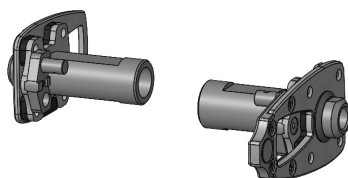
Kit mounted on chair

3



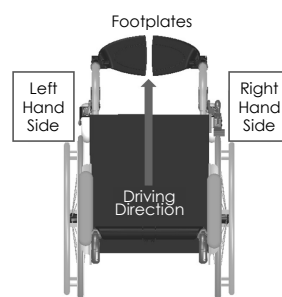
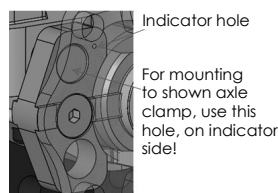
Kit per chair

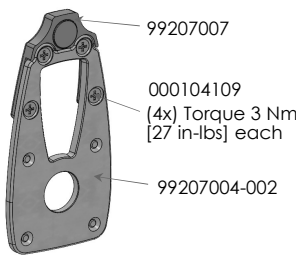
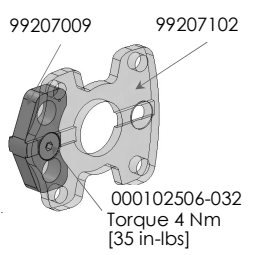
4



Mount direction of support plate 99207009

5



Premount #1 6  Assemble Premount #1	Premount #2 7  Assemble Premount #2	8 Start on the left-hand side of the chair. Follow Picture 1: remove screws 1 + 2 from axle clamp and loosen screw 3 from Anti-tip holder. Remove existing axle plug and replace it by new axle plug (part 99207117).	9 Replace existing inside mounted roundnut by longer one-hole roundnut 99207017, use existing roundnut for anti-tip holder.
10 Follow picture 1: Pay attention to the M90-plate, magnet direction points to the front for part 99207004-002. For this step, the axle sleeve 99207014 is mounted <u>without</u> Loctite (to first get the right position of the axle plug 99207117). See picture 5 for the right direction of the support plate.	11 Tighten axle plug with screws 1 + 2 on axle clamp with a torque of 5 Nm [44 in-lbs] each. Also tighten screw 3 on the anti-tip holder to a torque of 5 Nm [44 in-lbs] .	12 Now unscrew the axle sleeve 99207014. Use screw lock (Loctite 2701 or 271) along the thread and fasten the axle sleeve to a torque of 25 Nm [221 in-lbs] for the final connection.	13 For the right-hand side of the chair follow steps 8-12. Pay attention to mount the M90-plate pointing to the rear for part 99207004-001. See picture 2. For mounting of the support plate see picture 5.
14 Mount the M90 wheels and check, if the quick release axle fits tight in the axle sleeve. Adjust if necessary and check again.	16 Torque Support Spacers (99207124) can be added and removed to customize rear wheel spacing.		
15 Check positioning and functionality of the wheel locks. Adjust wheel locks if necessary and check again.			



DEALER/TECHNICIAN WARNING

Attention dealers and qualified technicians, do not operate or service this device without first reading the owners manual. If you do not understand the instructions and warnings in the owners manual please contact the Sunrise Medical Technical Service Department before operating and/or servicing the Empulse device. Failure to do so may result in damage and/or injury.

Find more information and important warnings in the device owner's manual or at: www.SunriseMedical.com.