



Please read these instructions carefully before beginning the assembly. Failure to understand and follow assembly instructions may result in injury to technician and/or end user and may void the warranty. If you have any questions call Sunrise Medical Technical Support at +1 (800) 333-4000.

Chairs



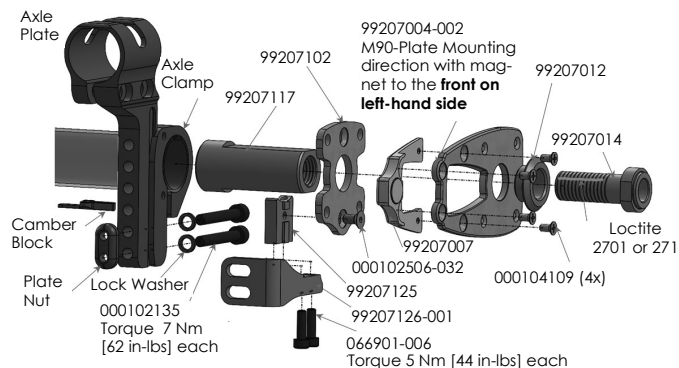
5R

Parts

99207004-001	M90-Plate Weldment non-Magnet Version	1
99207004-002	M90-Plate Weldment Magnet Version	1
99207007	Magnet Bracket Assy.	1
99207012	Cone bushing	2
99207014	Axle sleeve 55,6 mm M16x1	2
99207102	Torque support plate	2
99207125	Torque support	2
000102506-032	FHCS ISO10642 M5x10 8.8 ZN NP	2
066901-006	SHCS ISO4762 M5x16 8.8 DPS PL	4
99207126-001	Torque support plate LH	1
99207126-002	Torque support plate RH	1
99207117	Axle plug 0 deg/64 mm/M16x1	2
000102135	SHCS ISO4762 M6x45 8.8 DPS NP	4
000104109	FHCS ISO7046 M4x8 A2 ZNS NP	4
123842	Axle plf w/clamps BLK LNG RPO	1

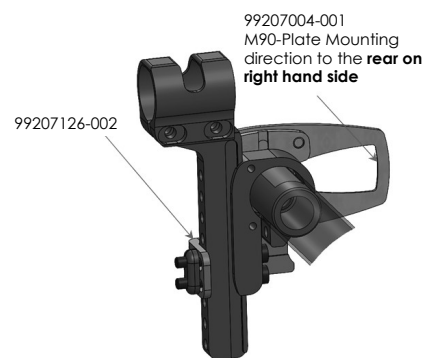
Mount with magnet, on chair left-hand side

1



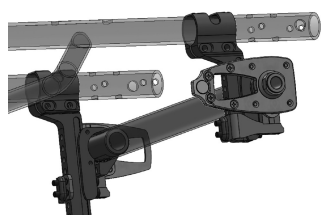
Mount without magnet, on chair right-hand side

2



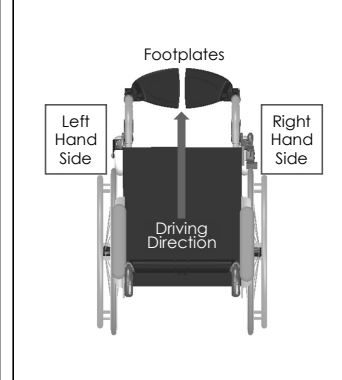
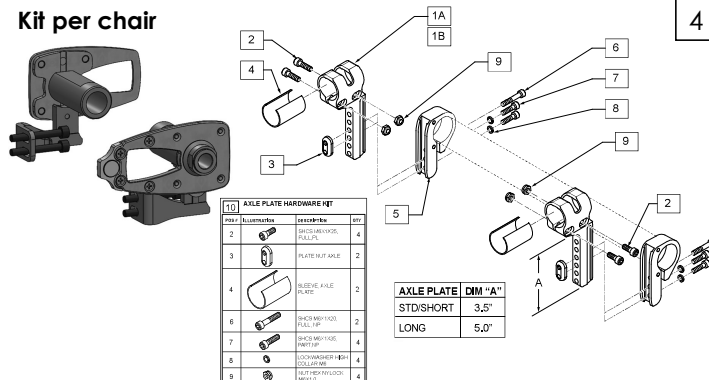
Kit mounted on chair

3



Kit per chair

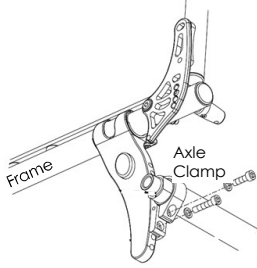
4



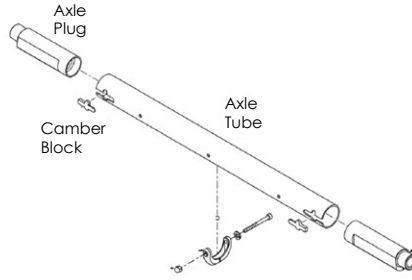
Axle plate change

Start by changing the axle plates on both sides of the chair.

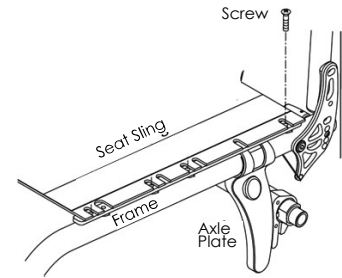
First loosen the screws from the axle clamp.



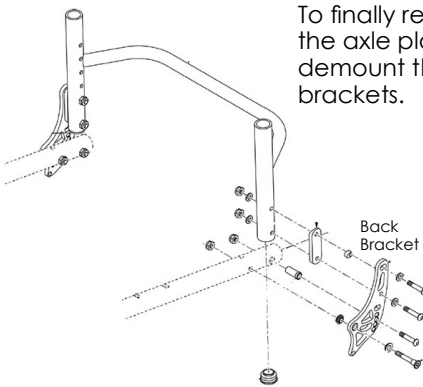
Demount the axle tube to remove the axle plugs and camber block.



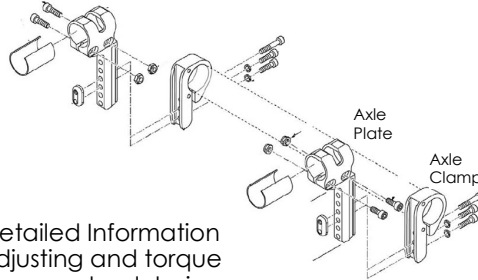
Remove the rearmost screws from the seat sling mount to change the existing axle plates.



To finally remove the axle plates, demount the back brackets.



Assemble the new axle plates onto the frame.

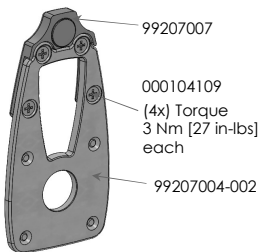


For detailed Information on adjusting and torque values see wheelchair owner's manual.

Assemble the axle tube with the axle clamps onto the axle plates.

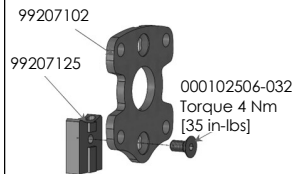
Installation of M90 Mounting Kit

Premount #1



Assemble Premount #1

Premount #2



Assemble Premount #2

Start on the left-hand side of the chair.

Follow picture 1: Pay attention to the M90-plate, magnet direction points to the front for part 99207004-002.

To mount axle sleeve 99207014 with axle plug 99207117 use screw lock Loctite 2701 or 271 along thread and fasten to a torque of **25 Nm [221 in-lbs]**.

For the right-hand side of the chair follow steps 13-14.

Pay attention to mount the M90-plate pointing to the rear for part 99207004-001.

See picture 2.

Mount the M90 wheels and check, if the quick release axle fits tight in the axle sleeve.

Adjust if necessary and check again.

Check positioning and functionality of the wheel locks. Adjust wheel locks if necessary and check again.

DEALER/TECHNICIAN WARNING

Attention dealers and qualified technicians, do not operate or service this device without first reading the owners manual. If you do not understand the instructions and warnings in the owners manual please contact the Sunrise Medical Technical Service Department before operating and/or servicing the Empulse device. Failure to do so may result in damage and/or injury.

Find more information and important warnings in the device owner's manual or at: www.SunriseMedical.com.



Customer Service: +1 (800) 333-4000
In Canada (800) 263-3390
or visit www.SunriseMedical.com

© 2025 Sunrise Medical (US) LLC
P/N 260406 Rev. A
Pg 2 of 2