



Please read these instructions carefully before beginning the assembly. Failure to understand and follow assembly instructions may result in injury to technician and/or end user and may void the warranty. If you have any questions, call Sunrise Medical Technical Support.

### Chairs



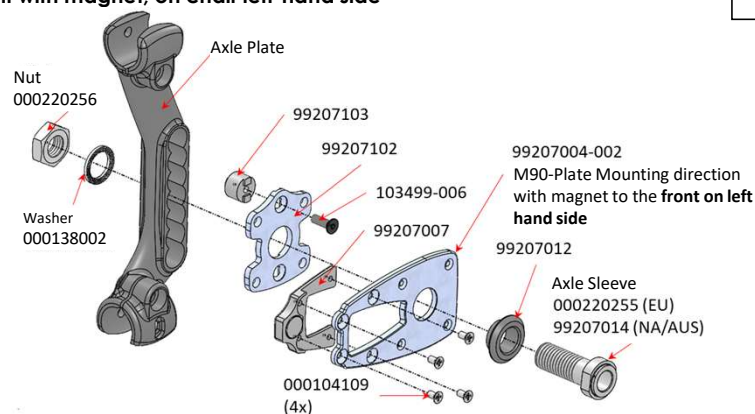
QS5 X

### Parts

99207004-001	M90-Plate Weldment Non-Magnet Version	1
99207004-002	M90-Plate Weldment Magnet Version	1
99207007	Magnet Bracket Assy.	1
000104109	FHCS ISO7046 M4x8 A2 ZNS NP	4
000220255 (EU) or 99207014 (NA/AUS)	Screw-in Adaptor 51 mm (EU) or Axle sleeve 55,6 mm M16x1 (NA/AUS)	2
103499-006	FHCS ISO 10642 M5x16 8.8 DPS NP	2
99207012	Cone Bushing	2
99207102	Torque support plate	2
99207103	Torque support pin	2
000220256	Nut DIN 936 M16x1 04 ZN NP	2
000138002	Lock Washer VS 16 ZN	2

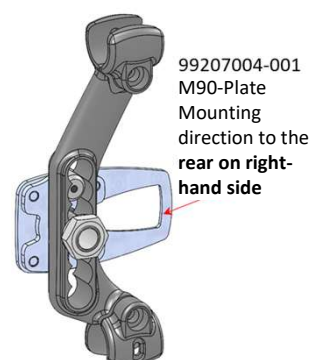
### Mount with magnet, on chair left-hand side

1



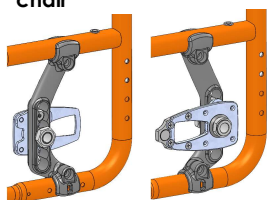
### Mount without magnet, on chair right-hand side

2



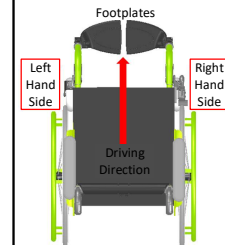
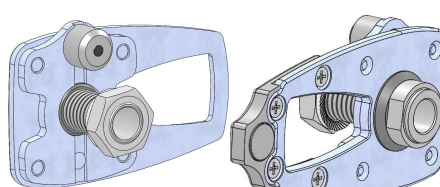
### Kit mounted on chair

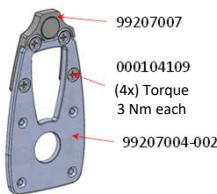
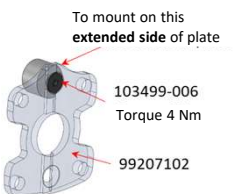
3



### Kit per chair

4



<div><div>Premount #1</div><div>5</div></div> <div><p>99207007</p><p>000104109 (4x) Torque 3 Nm each</p><p>99207004-002</p><p>Assemble premount #1</p></div>	<div><div>Premount #2</div><div>6</div></div> <div><p>To mount on this <b>extended side of plate</b></p><p>103499-006 Torque 4 Nm</p><p>99207102</p><p>Assemble premount #2</p></div>	<div><div></div><div>7</div></div> <div><p>Start on the left-hand side of the chair.</p><p>Remove the existing axle sleeve, nut and washer from the axle plate, by loosening the existing nuts.</p></div>	<div><div></div><div>8</div></div> <div><p>Follow picture 1: Pay attention to the M90-plate, magnet direction points to the front for part 99207004-002.</p><p>To mount nut/washer to the axle sleeve fasten to a torque of <b>35 Nm</b>.</p></div>
<div><div></div><div>9</div></div> <div><p>For the right-hand side of the chair follow steps 7-8.</p><p><b>Pay attention</b> to mount the M90-plate pointing to the rear for part 99207004-001. See picture 2.</p></div>	<div><div></div><div>10</div></div> <div><p>Mount the M90 wheels and check, if the quick release axle fits tight in the axle sleeve. Adjust if necessary and check again.</p></div>	<div><div></div><div>11</div></div> <div><p><b>Check positioning and functionality of the brakes. Adjust brakes if necessary and check again.</b></p></div>	

## DEALER/TECHNICIAN WARNING

Attention dealers and qualified technicians, do not operate or service this device without first reading the owners manual. If you do not understand the instructions and warnings in the owner's manual, please contact the Sunrise Medical Technical Service Department before operating and/or servicing the Empulse device. Failure to do so may result in damage and/or injury.

**Find more information and important warnings in the device owner's manual or at: [www.SunriseMedical.com](http://www.SunriseMedical.com).**