



Please read these instructions carefully before beginning the assembly. Failure to understand and follow assembly instructions may result in injury to technician and/or end user and may void the warranty. If you have any questions call Sunrise Medical Technical Support at +1 (800) 333-4000.

Chairs



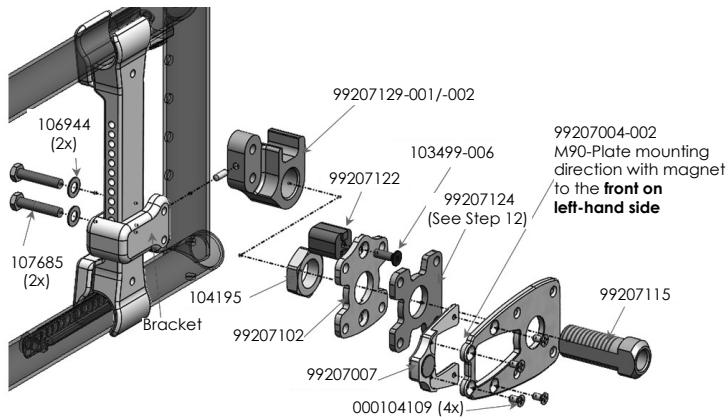
QXI

Parts

99207004-001	M90-Plate Weldment non-Magnet Version	1	103499-006	FHCS ISO10642 M5x16 8.8 DPS NP	2
99207004-002	M90-Plate Weldment Magnet Version	1	104195	Nut jam alum. M20 x 1,5	2
99207007	Magnet Bracket Assy	1	99207124	Torque support plate spacer 4 mm	2
000104109	FHCS ISO7046 M4x8 A2 ZNS NP	4	106944	Washer flat thin AN 1/4 ROHS	4
99207115	Axle sleeve 55,6 mm M20x1,5	2	107685	HHCS M6x1x30 part NP ROHS	4
99207102	Torque support plate	2	99207129-001	Axle sleeve support assy.	1
99207122	Torque support pin	2	99207129-002	Axle sleeve support assy.	1

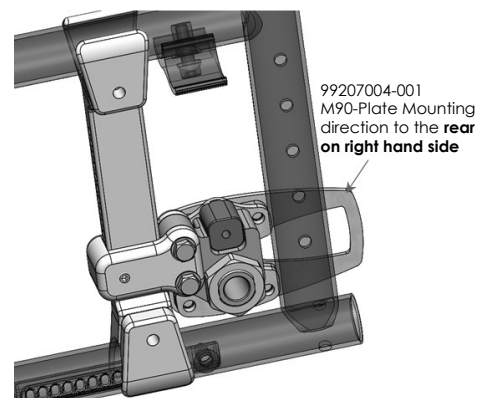
Mount with magnet, on chair left-hand side

1



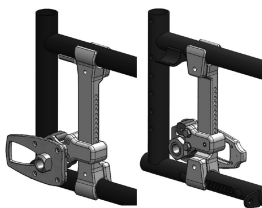
Mount without magnet, on chair right-hand side

2



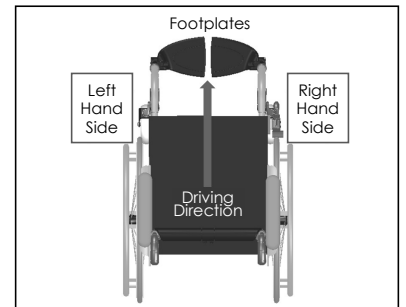
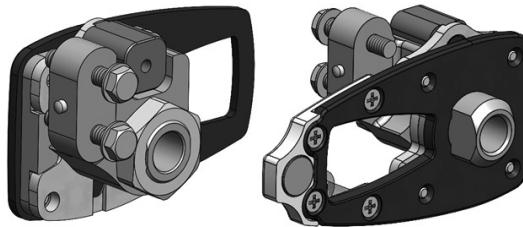
Kit mounted on chair

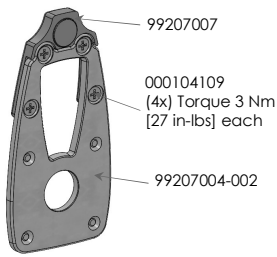
3



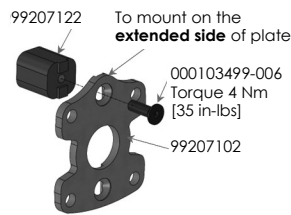
Kit per chair

4



Premount #1**5**

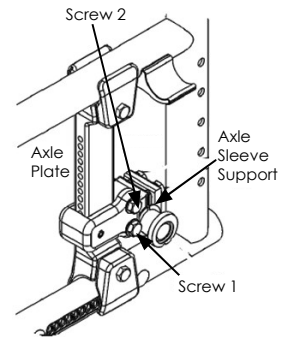
Assemble Premount #1

Premount #2**6**

Assemble Premount #2

Start on the left-hand side of the chair.

To prepare the change of the axle sleeve support, loosen screw 1 + 2. Remove the existing axle sleeve support from the axle plate. See picture on the right. Mount the new axle sleeve support 99207129-001/-002 onto the axle plate. Fasten screws 107685 to a torque of **16 Nm [142 in-lbs]** each. See picture 1.

**7**

Follow picture 1:

Pay attention to the M90-plate, magnet direction points to the front for part 99207004-002.

Locking cam position of 99207124 to the rear. See picture on the right.

To mount nut/washer to the axle sleeve fasten to a torque of **40 Nm [354 in-lbs]**.

**8**

For the right-hand side of the chair follow steps 7-8.

Pay attention to mount the M90-plate pointing to the rear for part 99207004-001.

See picture 2.

9

Mount the M90 wheels and check, if the quick release axle fits tight in the axle sleeve.

Adjust if necessary and check again.

10

Check positioning and functionality of the wheel locks.

Adjust wheel locks if necessary and check again.

11

Torque Support Spacers (99207124) can be added and removed to customize rear wheel spacing.

12**DEALER/TECHNICIAN WARNING**

Attention dealers and qualified technicians, do not operate or service this device without first reading the owners manual. If you do not understand the instructions and warnings in the owners manual please contact the Sunrise Medical Technical Service Department before operating and/or servicing the Empulse device. Failure to do so may result in damage and/or injury.

Find more information and important warnings in the device owner's manual or at: www.SunriseMedical.com.