

Empulse®

ADAPTING MOUNT FOR M90 TO SUNRISE SR45, IRIS, ZIPPIE IRIS



Please read these instructions carefully before beginning the assembly. Failure to understand and follow assembly instructions may result in injury to technician and/or end user and may void the warranty. If you have any questions, call Sunrise Medical Technical Support.

Chairs



SR45

IRIS



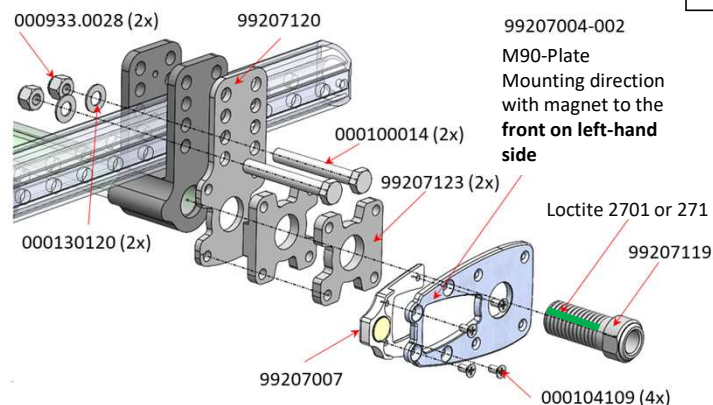
Zippie IRIS

Parts

99207004-001	M90-Plate Weldment Non-Magnet Version	1
99207004-002	M90-Plate Weldment Magnet Version	1
99207007	Magnet bracket assy.	1
000104109	FHCS ISO7046 M4x8 A2 ZNS NP	4
000100014	HHCS ISO4014 M8x60 8.8 ZN NP	4
99207119	Axle sleeve 55,6 mm 3/4-16 UNF-2A	2
99207120	Torque support plate Iris	2
99207123	Torque support plate spacer 6 mm	4
000933.0028	Nut ISO7040 M8 8 ZN PL	4
000130120	Washer ISO7090 8,4 ST ZN	4

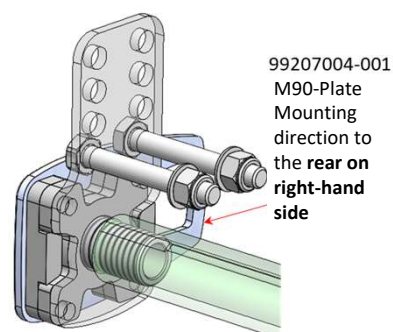
Mount with magnet, on chair left-hand side

1



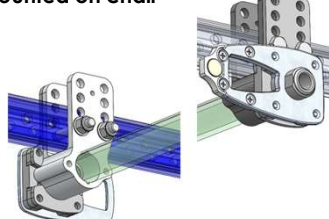
Mount without magnet, on chair right-hand side

2



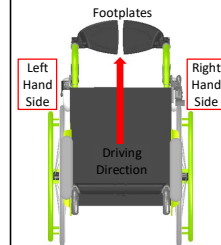
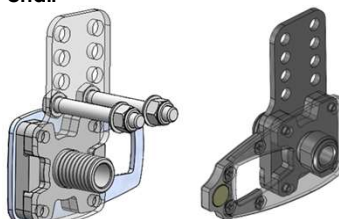
Kit mounted on chair

3



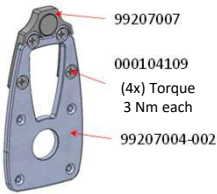
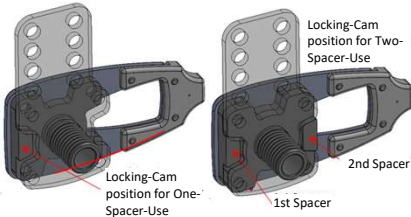
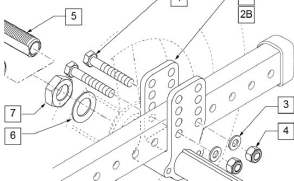
Kit per chair

4



Customer Service: Telephone: +(44) (0) 845 605 6688
or visit: www.sunrisemedical.co.uk

© 2024 Sunrise Medical (US) LLC
12/2024 P/N 260413-GB Rev. A
Pg 1 of 2

Premount #1 5  Assemble premount #1	Premount #2 6  Assemble premount #2	7 The two-spacer-use is only to be considered when more space between wheel and side guard is needed.
8 Start on the left-hand side of the chair. Remove the existing axle sleeve (5), nut (7), washer (6) and connecting parts (1+3+4) from the axle plate, as shown in the picture. 	9 Follow picture 1: Pay attention to the M90-plate, magnet direction points to the front for part 99207004-002. To mount axle sleeve 99207119 use Screw Lock (Loctite 2701 or 271) along thread and fasten to a torque of 35 Nm .	10 For the right-hand side of the chair follow steps 7-8. Pay attention to mount the M90-plate pointing to the rear for part 99207004-001. See picture 2.
11 Mount the M90 wheels and check, if the quick release axle fits tight in the axle sleeve. Adjust if necessary and check again.	12 Check positioning and functionality of the brakes. Adjust brakes if necessary and check again.	

⚠ DEALER/TECHNICIAN WARNING

Attention dealers and qualified technicians, do not operate or service this device without first reading the owners manual. If you do not understand the instructions and warnings in the owner's manual, please contact the Sunrise Medical Technical Service Department before operating and/or servicing the Empulse device. Failure to do so may result in damage and/or injury.

Find more information and important warnings in the device owner's manual or at: www.SunriseMedical.com.