



Please read these instructions carefully before beginning the assembly. Failure to understand and follow assembly instructions may result in injury to technician and/or end user and may void the warranty. If you have any questions call Sunrise Medical Technical Support at +1 (800) 333-4000.

Chairs



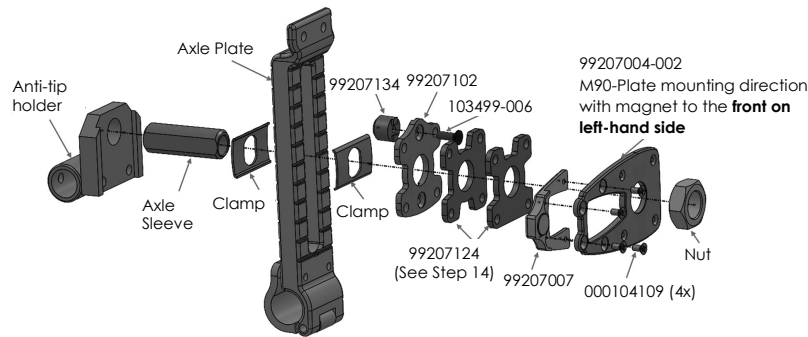
X'CAPE

Parts

99207004-001	M90-Plate Weldment Non-Magnet Version	1
99207004-002	M90-Plate Weldment Magnet Version	1
99207007	Magnet Bracket Assy.	1
000104109	FHCS ISO7046 M4x8 A2 ZNS NP	4
103499-006	FHCS ISO10642 M5x16 8.8 DPS NP	2
99207102	Torque support plate	2
99207134	Torque support pin NA	2
99207124	Torque Support Plate Spacer 4 mm	4

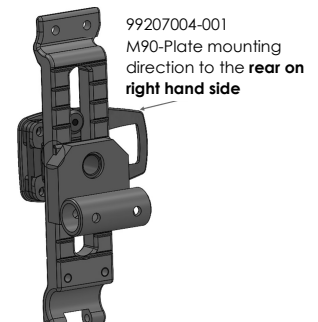
Mount with magnet, on chair left-hand side

1



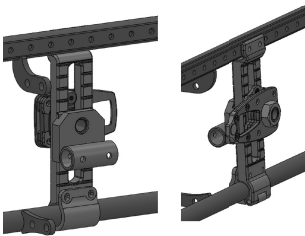
Mount without magnet, on chair right-hand side

2



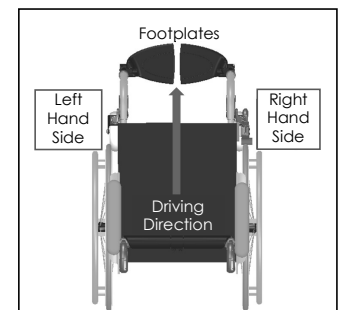
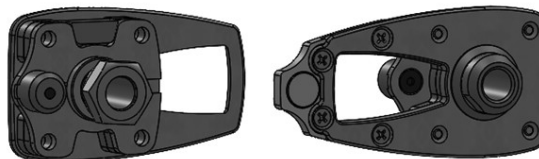
Kit mounted on chair

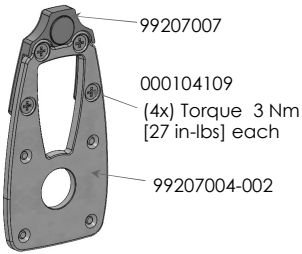
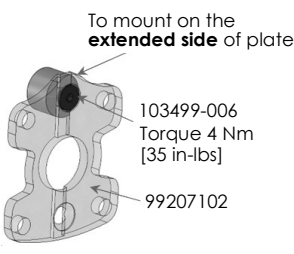
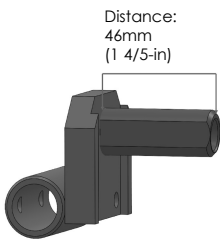
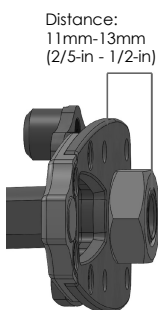
3



Kit per chair

4



<div> <div>5</div> <div> Premount #1  </div> <div>Assemble Premount #1</div> </div>	<div> <div>6</div> <div> Premount #2  </div> <div>Assemble Premount #2</div> </div>	<div> <div>7</div> <div> <p>Start on the left-hand side of the chair.</p> <p>Remove the existing axle sleeve, anti-tip holder, and nut from the axle plate, by loosening the existing nut.</p> </div> </div>	<div> <div>8</div> <div> <p>Reattach the existing axle sleeve into the existing anti-tip holder.</p> <p>Align it so that the overall camber of the chair is 0°. The distance between the end of the anti-tip holder and the end of the axle sleeve must be 46mm (1 4/5-in).</p>  </div> </div>
<div> <div>9</div> <div> <p>Follow picture 1: Pay attention to the M90-plate, magnet direction points to the front for part 99207004-002.</p> <p>Fasten the existing nut with a torque of 41 Nm [363 in-lbs] onto the axle sleeve.</p> </div> </div>	<div> <div>10</div> <div> <p>After tightening the nut, measure the distance between the end of the M90-plate and the most outside part (nut or axle sleeve).</p> <p>This should be between 11 mm and 13 mm (2/5-in and 1/2-in). Ideally 12,5 mm (1/2-in).</p> <p>If not, loosen nut again and adjust axle sleeve in anti-tip holder.</p> <p>See picture.</p>  </div> </div>	<div> <div>11</div> <div> <p>For the right-hand side of the chair follow steps 7-10.</p> <p>Pay attention to mount the M90-plate pointing to the rear for part 99207004-001. See picture 2.</p> </div> </div>	<div> <div>12</div> <div> <p>Mount the M90 wheels and check if the quick release axle fits tight in the axle sleeve.</p> <p>Adjust if necessary and check again.</p> </div> </div> <div> <div>13</div> <div> <p>Check positioning and functionality of the wheel locks.</p> <p>Adjust wheel locks if necessary and check again.</p> </div> </div>
<div> <div>14</div> <div> <p>Torque Support Spacers (99207124) can be added and removed to customize rear wheel spacing.</p> </div> </div>			



DEALER/TECHNICIAN WARNING

Attention dealers and qualified technicians, do not operate or service this device without first reading the owners manual. If you do not understand the instructions and warnings in the owners manual please contact the Sunrise Medical Technical Service Department before operating and/or servicing the Empulse device. Failure to do so may result in damage and/or injury.

Find more information and important warnings in the device owner's manual or at: www.SunriseMedical.com.