



FLIP-BACK HEIGHT ADJUSTABLE ARM (QUICKIE 2/2HP) INSTRUCTION SHEET



Please read these instructions carefully before beginning the assembly. Failure to understand and follow assembly instructions may result in injury to technician and/or end user and may void the warranty. If you have any questions call Sunrise Medical Technical Support at 800.333.4000.

Flip-Back Height-Adjustable Armrest Key

1. Upper securing lever
2. Armpad
3. Release latch
4. Rear receiver
5. Rear backrest tube
6. Rear armrest tube
7. Top frame tube
8. Bolt 2" long
9. Two hole toggle (not included)
10. Nut (2)
- 11A. Front receiver Right
- 11B. Front receiver Left (shown)
12. Bolts 1 3/8" long
13. Front mounting clamp
14. Bolt 1 3/4" long
15. Bracket
16. Washers 1/4" flat (2)

I. Mounting Armrest Assembly to wheelchair

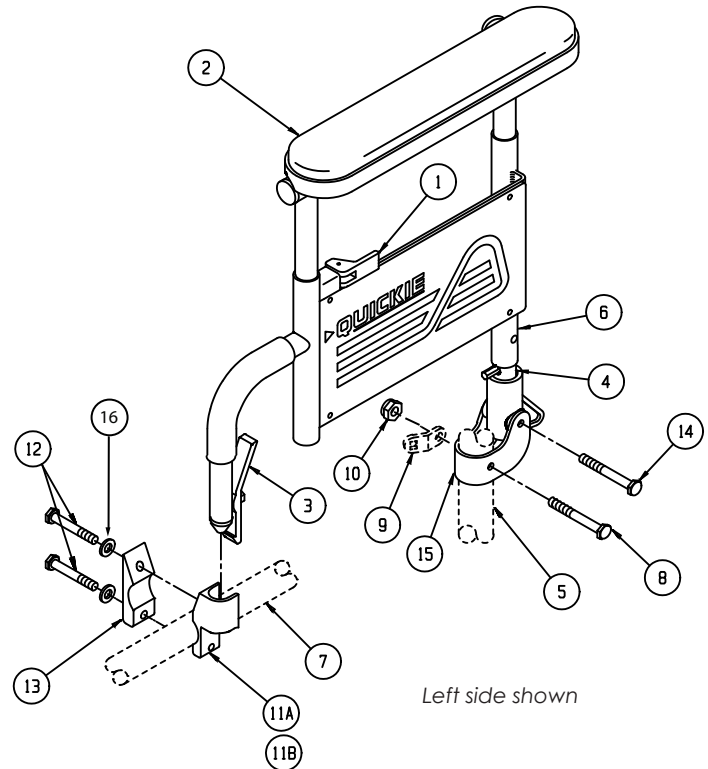
- a. Insert bolt (8) through bracket (15) and hole in rear backrest tube (5) as shown.
- b. Be sure two hole toggle (9) is in the correct position as shown in diagram.
- c. Tighten nut (10) on end just until rear arm is able to support its own weight. (Arm must be able to rotate).
- d. Insert bolt (14) through bracket (15) and receiver (4), tighten to allow movement.
- e. Rotate arm forward to locate position of front receiver (11A, 11B). Insert arm before securely fastening front receiver (11A, 11B) and mounting clamps (13). Insert bolts (12) through washers (16) and holes in the front mounting clamp (13). Thread bolts into the holes located in the front receiver (11A, 11B). Tighten bolt securely as shown on diagram.

2. Height Adjustment

- a. Release the upper securing lever (1).
- b. Slide armpad (2) up or down to desired height.
- c. Return lever (1) to locked position.
- d. Push armpad (2) until the lever (1) locks firmly into place.

3. Flipping Armrest Back

- a. Depress the release latch (3). Rotate arm toward back of the wheelchair.
- b. To return armrest to down position, push armpad down until release latch (3) locks firmly into place.



4. Removing Armrest

- a. Depress the release latch (3). Rotate arm assembly toward back of wheelchair. The rear receiver (6) will automatically release.
- b. Lift armrest assembly to remove it from rear receiver.

5. Replacing Armrest

- a. Slide the rear armrest tube onto rear receiver.
- b. Rotate armrest down until it locks firmly into place.

DEALER/TECHNICIAN WARNING



Attention dealers and qualified technicians, do not operate or service this device without first reading the owners manual. If you do not understand the instructions and warnings in the owners manual please contact the Sunrise Medical Technical Service Department before operating and/or servicing the Quickie device. Failure to do so may result in damage and/or injury.

Sunrise Medical • 2842 Business Park Ave. • Fresno, CA 93727 • USA
In Canada (800) 263-3390



Customer Service: 800.333.4000
www.SunriseMedical.com

©2020 Sunrise Medical (US) LLC
06.2020 P/N 950036 Rev. F
Page 1 of 2



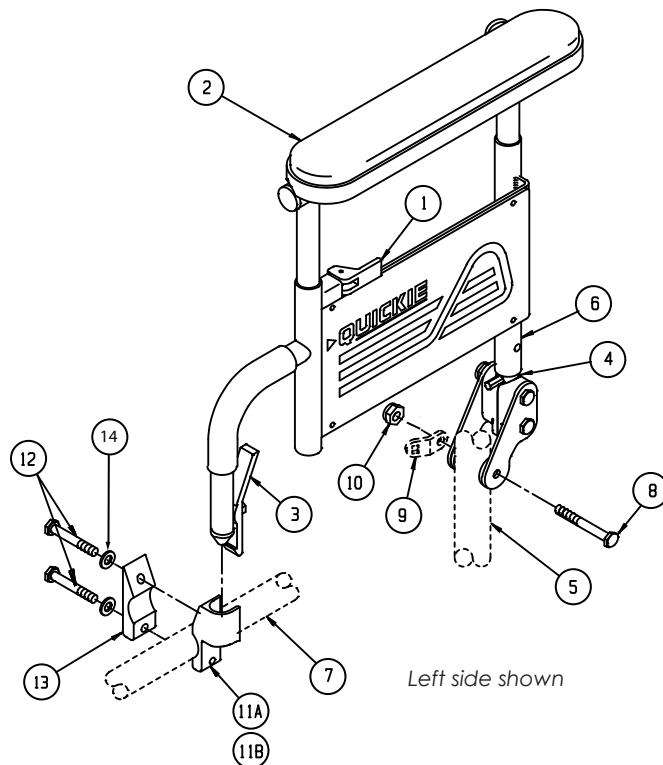
FLIP-BACK HEIGHT ADJUSTABLE ARM (QUICKIE 2HPTi/Rx/P110) INSTRUCTION SHEET



Please read these instructions carefully before beginning the assembly. Failure to understand and follow assembly instructions may result in injury to technician and/or end user and may void the warranty. If you have any questions call Sunrise Medical Technical Support at 800.333.4000.

Flip-Back Height-Adjustable Armrest Key

1. Upper securing lever
2. Armpad
3. Release latch
4. Rear receiver
5. Rear backrest tube
6. Rear armrest tube
7. Top frame tube
8. Bolt
9. Two hole toggle (not included)
10. Nut
- 11A. Front receiver Right
- 11B. Front receiver Left (shown)
12. Bolts
13. Front mounting clamp
14. Washers 1/4" flat (2)



I. Mounting Armrest Assembly to wheelchair

- a. Insert bolt (8) through hole in rear backrest tube (5) as shown.
Note: for Quickie 2HPTi add washers (P/N 561016) in between pivot plate and saddles.
- b. Be sure two hole toggle (9) is in the correct position as shown in diagram.
- c. Tighten nut (10) on end just until rear arm is able to support its own weight. (Arm must be able to rotate).
- d. Rotate arm forward to locate position of front receiver (11A, 11B). Insert arm before securely fastening front receiver (11A, 11B) and mounting clamps (13). Insert bolts (12) through washers (14) and holes in the front mounting clamp (13). Thread bolts into the holes located in the front receiver (11A, 11B). Tighten bolt securely as shown on diagram.

2. Height Adjustment

- a. Release the upper securing lever (1).
- b. Slide armpad (2) up or down to desired height.
- c. Return lever (1) to locked position.
- d. Push armpad (2) until the lever (1) locks firmly into place.

3. Flipping Armrest Back

- a. Depress the release latch (3). Rotate arm toward back of the wheelchair.
- b. To return armrest to down position, push armpad down until release latch (3) locks firmly into place.

4. Removing Armrest

- a. Depress the release latch (3). Rotate arm assembly toward back of wheelchair. The rear receiver (6) will automatically release.
- b. Lift armrest assembly to remove it from rear receiver.

5. Replacing Armrest

- a. Slide the rear armrest tube onto rear receiver.
- b. Rotate armrest down until it locks firmly into place.

DEALER/TECHNICIAN WARNING



Attention dealers and qualified technicians, do not operate or service this device without first reading the owners manual. If you do not understand the instructions and warnings in the owners manual please contact the Sunrise Medical Technical Service Department before operating and/or servicing the Quickie device. Failure to do so may result in damage and/or injury.

Sunrise Medical • 2842 Business Park Ave. • Fresno, CA 93727 • USA
In Canada (800) 263-3390