



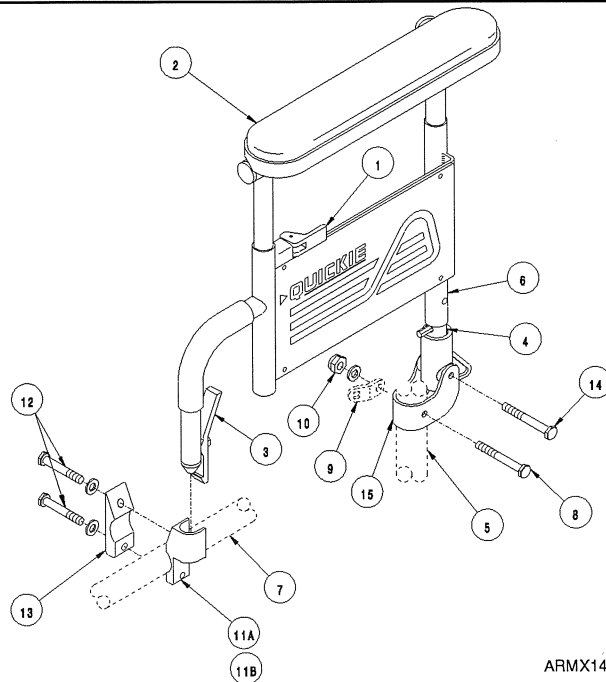
2842 Business Park Avenue
 Fresno, California 93727-1328
 (209) 292-2171 • (800) 456-8168

INSTRUCTION SHEET

Flip-Back Height Adjustable Arm (Quickie 2/2HP)

Flip-Back Height-Adjustable Armrest Key

1. Upper securing lever
2. Armpad
3. Release latch
4. Rear receiver
5. Rear backrest tube
6. Rear armrest tube
7. Top frame tube
8. Bolt 2" long
9. Two hole toggle (Not Included)
10. Nut (2)
- 11A. Front receiver Right
- 11B. Front receiver Left
12. Bolts 1 3/8 long
13. Front mounting clamp
14. Bolt 1 3/4 long
15. Bracket



1. Mounting armrest assembly to wheelchair

- a. Insert bolt (8) through bracket (15) and hole in rear backrest tube (5) as shown.
- b. Be sure two hole toggle (9) is in the correct position as shown in diagram.
- c. Tighten nut (10) on end just until rear arm is able to support its own weight. (Arm must be able to rotate.)
- d. Insert bolt (14) through bracket (15) and receiver (4) tighten to allow movement.
- e. Rotate arm forward to locate position of front receiver (11A, 11B). Insert arm before securely fastening front receiver (11A, 11B) and mounting clamps (13). Tighten bolts (12) securely as shown on diagram.

2. Height Adjustment

- a. Release the upper securing lever (1).
- b. Slide armpad (2) up or down to desired height.
- c. Return lever (1) to locked position.
- d. Push armpad (2) until the lever (1) locks firmly into place.

3. Flipping Armrest Back

- a. Depress the release latch (3). Rotate arm toward back of the wheelchair.
- b. To return armrest to down position, push armpad down until release latch (3) locks firmly into place.

4. Removing Armrest

- a. Depress the release latch (3). Rotate arm assembly toward back of wheelchair. The rear receiver (6) will automatically release.
- b. Lift armrest assembly to remove it from rear receiver.

5. Replacing Armrest

- a. Slide the rear armrest tube onto rear receiver.
- b. Rotate armrest down until it locks firmly into place.

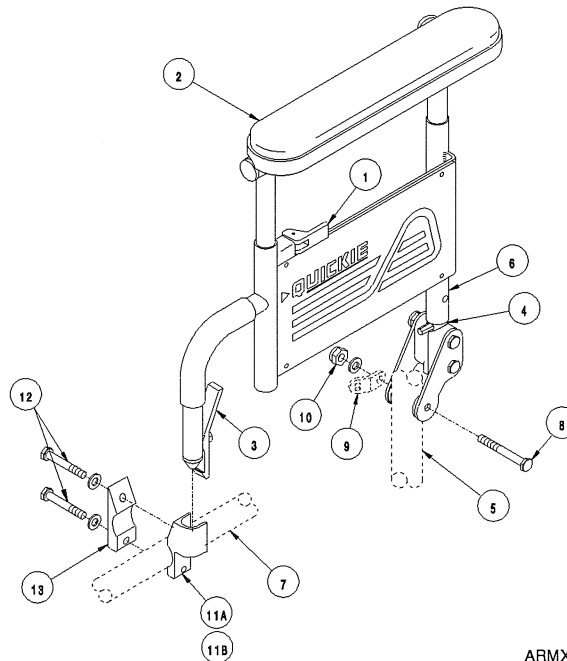
FOR DEALER USE Installed by: _____ Date: _____ (retain as record of installation)

INSTRUCTION SHEET

Flip-Back Height Adjustable Arm (Quickie 2HPTi/Rx/P110)

Flip-Back Height-Adjustable Armrest Key

1. Upper securing lever
2. Armpad
3. Release latch
4. Rear receiver
5. Rear backrest tube
6. Rear armrest tube
7. Top frame tube
8. Bolt
9. Two hole toggle (Not Included)
10. Nut
- 11A. Front receiver Right
- 11B. Front receiver Left
12. Bolts
13. Front mounting clamp



ARMX14B

1. Mounting armrest assembly to wheelchair

- a. Insert bolt (8) through hole in rear backrest tube (5) as shown.
Note: For Quickie 2HPTi add washers (P/N 561016) in between pivot plate and saddles.
- b. Be sure two hole toggle (9) is in the correct position as shown in diagram.
- c. Tighten nut (10) on end just until rear arm is able to support its own weight. (Arm must be able to rotate.)
- d. Rotate arm forward to locate position of front receiver (11A, 11B). Insert arm before securely fastening front receiver (11A, 11B) and mounting clamps (13). Tighten bolts (12) securely as shown on diagram.

2. Height Adjustment

- a. Release the upper securing lever (1).
- b. Slide armpad (2) up or down to desired height.
- c. Return lever (1) to locked position.
- d. Push armpad (2) until the lever (1) locks firmly into place.

3. Flipping Armrest Back

- a. Depress the release latch (3). Rotate arm toward back of the wheelchair.
- b. To return armrest to down position, push armpad down until release latch (3) locks firmly into place.

4. Removing Armrest

- a. Depress the release latch (3). Rotate arm assembly toward back of wheelchair. The rear receiver (6) will automatically release.
- b. Lift armrest assembly to remove it from rear receiver.

5. Replacing Armrest

- a. Slide the rear armrest tube onto rear receiver.
- b. Rotate armrest down until it locks firmly into place.

FOR DEALER USE Installed by: _____ Date: _____ (retain as record of installation)