

INSTRUCTION SHEET

Q2 & 2HP TRANSIT BRACKET KIT INSTALLATION

Failure to carefully read, understand and follow these instructions could result in severe injuries or death. Please read and understand these instructions before beginning the installation. Before beginning the installation, make sure that all the parts are included. Below is an illustration showing what should be included in the Transit Bracket Kit.



Figure 1: Front bracket (2 included)



Figure 2: Rear bracket (2 included)



Figure 3: Required bolts and nuts for rear



Figure 4: Required bolts and nuts for front

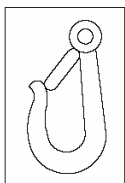


Figure 5: Decal Mount Location



Figure 6: Clevis Pin

The required tools to install the Quickie 2 and Quickie 2HP Transit Bracket Kit are listed below

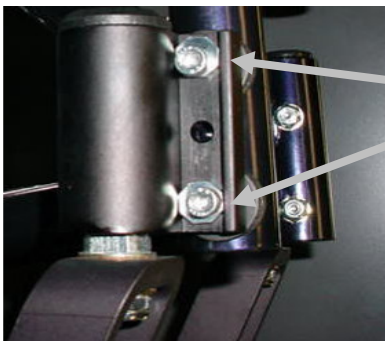
- 1. 7/16" Socket & Ratchet***
- 2. 7/16" Wrench***
- 3. 3/16" Allen Wrench***
- 4. Torque Wrench***

INSTRUCTION SHEET

Q2 & 2HP TRANSIT BRACKET KIT INSTALLATION

To Install the Front Transit Bracket

1. Please position the wheelchair back in the “home” position before continuing. Working on one front wheel at a time, using the 7/16” socket and ratchet, remove the two (2) bolts and nuts that are holding the front wheel mount in place. (Note: Observe orientation of eccentric washer (**Figure 5**) before removing hardware to ensure proper installation in later steps, plus observe orientation of the caster barrel for later steps.) By doing this, the wheel mount will come off; as will the saddles and all that will be left will be the frame. Place these parts, and the nuts off to one side, as you will be using these parts in the following steps. Although the bolts will not be used in the mounting of the transit brackets, they should be kept in a safe place, in the case the transit brackets will be removed.



Remember Orientation of Eccentric Washer to help in the reinstallation in later steps.

Note: Not all chairs use same orientation for eccentric washer.

Figure 5: Orientation of Eccentric Washer

2. Take the 1/4-28 x 2-1/8” C/S CLR ZN bolt, which is pictured below (**Figure 6**) and place the eccentric washer that was included in the kit, on it (**Figure 7**). Do this same process again on another bolt, as two (2) of these will be needed when mounting the front wheel mount and front transit bracket.



Figure 6: Bolt for front bracket mount



Figure 7: Bolt and washer

INSTRUCTION SHEET

Q2 & 2HP TRANSIT BRACKET KIT INSTALLATION

3. Take the wheel mount and insert the two (2) bolts and washer sets into the caster barrel. The caster barrel has a flat side, and on the other side, there is a cut out. The bolt and washer set must be inserted such that the washer comes to rest “within” the cut out section. From above, the current setup should look very much like what is shown in **Figure 8**. (Note: Place eccentric washer in same orientation as recorded in step 1.)



Caster Barrel

Figure 8: Washer within “cutout” of wheel mount

4. Now the front transit bracket must be placed on the setup from step 3. The bracket should be placed so that the transit bracket is facing toward the rear of the chair but the caster barrel can be leading (facing forward) or trailing (facing rearward) the caster barrel should be reassembled the same way it was oriented in step 1. This setup can be seen in **Figure 9**. (Note: The caster barrel is depicted in the trailing position in **Figure 9**).



Figure 9: Bracket attached to wheel mount

INSTRUCTION SHEET

Q2 & 2HP TRANSIT BRACKET KIT INSTALLATION

5. Prior to attaching the wheel mount and bracket to the frame, the saddles have to be placed on the bolt. These saddles serve to protect the frame from metal on metal contact. The flat side of the saddle should be placed against the transit bracket and the curved side will be placed against the frame.
6. Insert the bolts through the front wheel mount holes as shown below (**Figure 10**). Position the saddles so that they rest comfortably against the frame (curved sides should be resting against the frame, NOT THE FLAT SIDE). Once the bolts have passed through the frame, fasten the nuts that were removed in step one using the 3/16" allen wrench. The bolts and nuts must be tightened to 8-9ft-lbs of torque. This can be done using a torque wrench. After assembly, affix the Transit Mount Location Decal as seen in **Figure 11**.

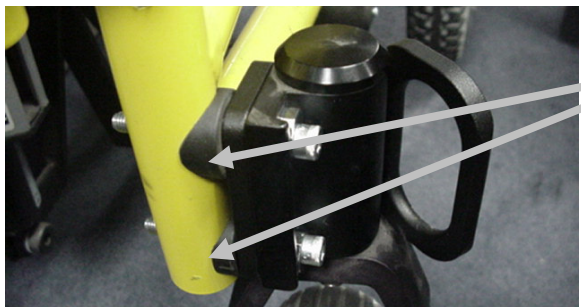


Figure 10: Setup placed on frame

Notice the saddles flush against the frame.

Transit Mount Location Decal



Figure 11: Transit Mount Location Decal Placement

INSTRUCTION SHEET

Q2 & 2HP TRANSIT BRACKET KIT INSTALLATION

7. Do steps 1-6 again for the other front wheel. The final setup should look like **Figure 12** or **Figure 13** located on the next page.



Figure 12: Final Setup with Caster Barrel Leading



Figure 13: Final Setup with Caster Barrel Trailing

Note: For the Quickie 2 HP mount the front transit bracket the same as above, but the existing 2" clevis pin has to be replaced with a 2 1/4" Clevis pin. The Clevis Pin Location is shown in **Figure 13**.



Figure 13: Clevis Pin Location

INSTRUCTION SHEET

Q2 & 2HP TRANSIT BRACKET KIT INSTALLATION

To Install the Rear Transit Bracket

1. Working on the rear, install the transit mounts at the same time. Using the 7/16" socket and ratchet, loosen the nuts that are located at the rear of the axle plate. Remove the bolt, washer and nut and put them off to a side. Do this for all four bolts that are located at the rear of the axle plates. If the Anti Tip Receiver is mounted to the inside of the frame move the left receiver to the outside and put it on the right side of the wheel chair and do the opposite for the other side. If the Anti Tips are already mounted on the outside just remove the existing hardware and leave them in the same location. Although the bolts will not be used in the mounting of the transit brackets, they should be kept in a safe place, in the case the transit brackets will be removed.
2. With the bolts, washers and nuts now removed, all that should be left is the axle plate and anti tip. Next insert the 1/4-28 X 2 1/2 G8 HEX C/S bolt (figure 1) through the anti tip and frame as seen in figure 2.



Figure 1: Rear Bolts



Figure 2: Bolts inserted into Anti Tip And frame.

INSTRUCTION SHEET

Q2 & 2HP TRANSIT BRACKET KIT INSTALLATION

3. Next slide the saddles over the bolts and allow them to rest against the frame and then slide the rear transit mount over the bolts. Although the rear transit bracket looks symmetrical, there is one slot that is not centered (figure 3). When the bracket is placed against the frame, this slot should be positioned more towards the top of the frame. Next add the ¼ AN Washers Thin over the bolts and attach using the ¼-20 Nylock Nut as seen in figure 4. The assembly should look like Figure 5 at this point.



Figure 3: Rear transit mount



Figure 4: ¼-20 Nylock Nut

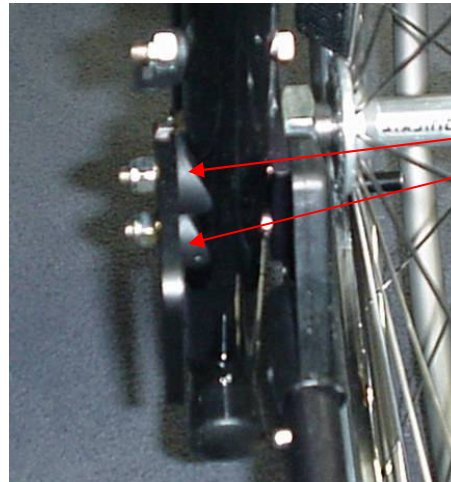


Figure 5: Rear mount position

Notice the saddles flush against the frame.

INSTRUCTION SHEET

Q2 & 2HP TRANSIT BRACKET KIT INSTALLATION

4. Tighten the bolts and nuts using a 7/16" socket and ratchet. The nuts and bolts should be tightened to 8-9ft-lbs of torque. This can be done using a torque wrench. Finally add the Transit Mount Location Label to the rear transit bracket. The final setup is shown in figure 6.



Figure 6: Complete Setup