



VOYAGE SEAT BASE LATCH KIT



Please read these instructions carefully before beginning the installation. Failure to understand and follow installation instructions may result in injury to installer and/or end user and may void the warranty.

If you have any questions call Sunrise Medical Technical support at 800-333-4000

1. Parts in this latch kit:

- | | |
|----------------------------|--------------------------|
| 1. 2x Seat Base Latch | 3. 2x Dowel Pin M4 x 8mm |
| 2. 2x FH Screw M5 x .8 x 8 | 4. 2x Spring 3/16 x 7/8" |

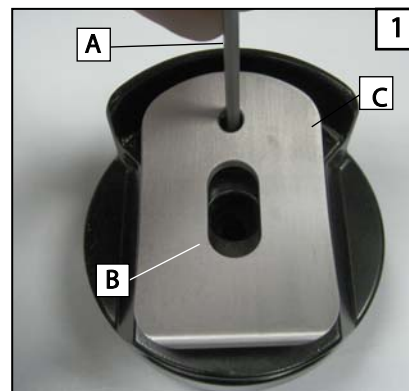
2. Tools needed:

- a. 3mm hex key

A. REMOVE THE OLD LATCH PARTS

1. Loosen the main attachment screw 1 2

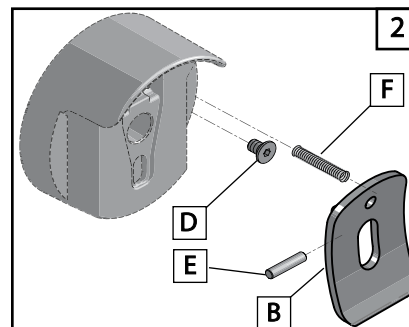
- Remove the seating shell from the Voyage Base and set it on a good work bench or a table for the installation.
- Using a 3mm hex key (A) loosen the screw (D) until the latch (B) can be removed from the seat base receiver (C)



B. INSTALL THE NEW PARTS

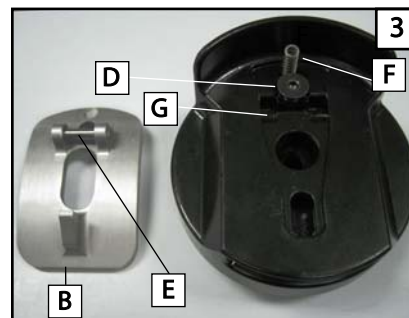
2. Pre-assemble the Latch parts 2 3

- Insert the screw (D) about 1 1/2 turns (**Do not tighten**)
- Insert the dowel pin (E) into the Latch (B) as shown.
- Place the spring (F) into the spring guide hole as shown.
- Align the dowel pin and latch assembly with the Latch cradle (G) and spring and apply a little pressure to hold the assembly together.
- Using the 3mm hex key, tighten the screw. This action should pull the pin and latch into the cradle and attach the assembly to the base receiver.
- Repeat this process for the other side.



C. CHECKOUT

- Verify that all hardware that has been installed and is tight before using the device.
- Make sure that the new latch assembly has been installed on both sides of the chair,
- Before use, test that the Seating shell fully locks into the new latch assembly, and that it releases easily when both latch levers are pressed. Test this several times to ensure the safety of the occupant.



DEALER/TECHNICIAN WARNING



WARNING

Attention dealers and qualified technicians, do not operate or service the device without first reading the owners manual. If you do not understand the instructions and warnings in the owners manual please contact the Quickie Technical Service Department before operating and/or servicing the Quickie wheelchair. Failure to do so may result in damage and/or injury.



Customer Service: 800.333.4000
www.SunriseMedical.com

©2013 Sunrise Medical (US) LLC
7.13 IS00129 Rev.B