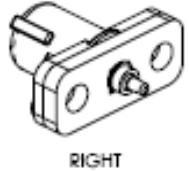
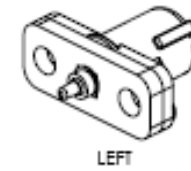


## INSTRUCTION SHEET IRIS AND ZIPPIE IRIS ROCKER PIN RELEASE REPLACEMENT INSTRUCTIONS



The following assembly instructions are for replacing the Iris pin releases for the foot lock on the Iris rocker assembly.

To install pin releases:

1. Remove bolt, nut, and washers from cross brace, Fig 1. Note which hole bolt was in, save hardware.
2. Slide insert bar to the left, remove cross brace assembly from chair, set aside. Fig 1.
3. Remove nuts from pin release housing on left side of chair, only, Fig. 2. Remove housing and discard. Save hardware, (nuts, washers, and spacers), Fig 3. **WARNING:** Replace one side at a time. If both sides are removed rocker will be free to move resulting in possible injury.

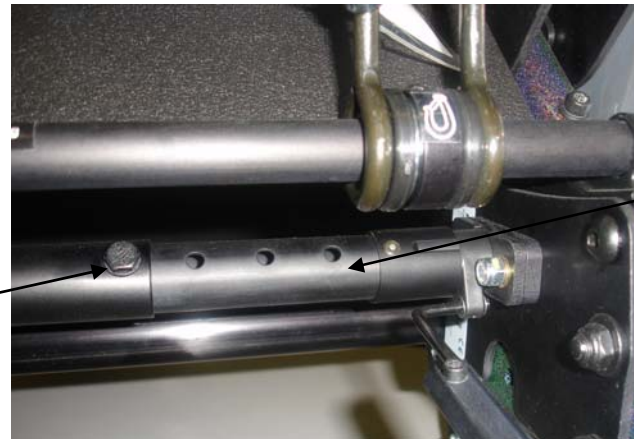


Fig. 1

Insert bar

Pin release housing

4. Slide new left pin release housing over bolts on rocker assembly. Make sure tab is oriented downward, Fig 2. Slide spacers over bolts making sure lip of spacer is over lip of housing, Fig 4. Secure with washers and nuts, tighten securely.

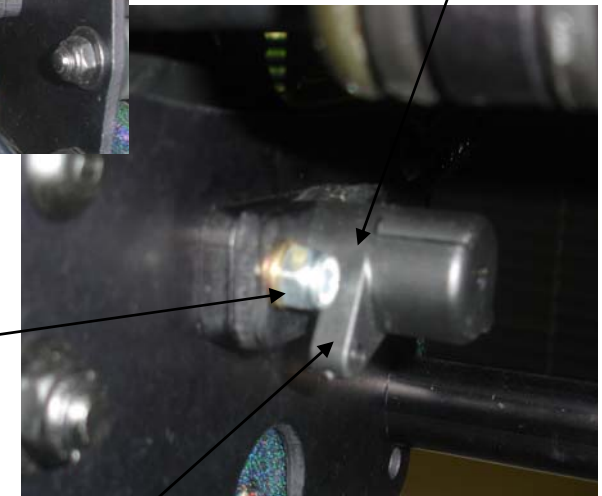


Fig. 2

5. Remove nuts from pin release housing on right side of chair Fig 5.



Fig. 3

Pin release housing

Spacers

Make sure lip of spacer fits over lip of housing.

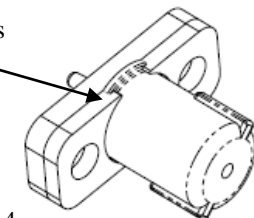


Fig. 4



Fig. 5

Pin release housing right side.

**FOR DEALER USE** Installed by: \_\_\_\_\_ Date: \_\_\_\_\_ (retain as record of installation)

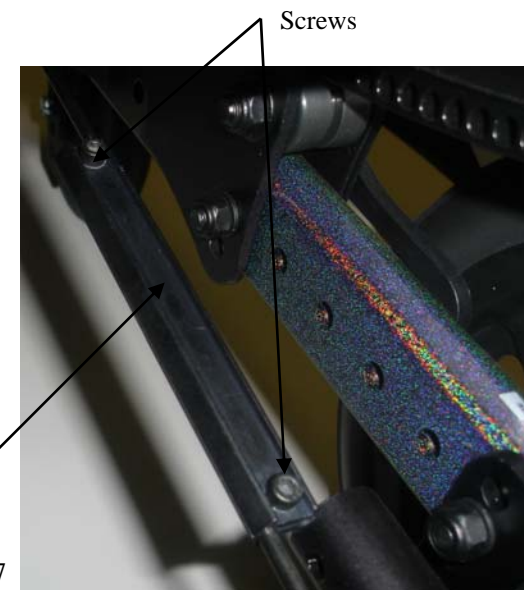
## INSTRUCTION SHEET IRIS AND ZIPPIE IRIS ROCKER PIN RELEASE REPLACEMENT INSTRUCTIONS

6. Remove end 'e' ring and pin housing from rod, discard Fig 6. Rod may be removed from rod housing for easier access to 'e' ring. First note location of housing on the rods then loosen screws and remove rod, Fig 7.
7. Slide new right side pin housing onto rod and secure with new 'e' ring provided.
8. Slide pin housing and spacers over bolts on rocker Fig 8. Make sure lip of spacer fits securely over lip of housing Fig 4. Secure with saved nuts and brass washers. Tighten securely.
9. Slide rod back into housing at marked location, if necessary, and retighten screws on rod housing, Fig 7.
10. Slide cross brace assembly over pin housing on left side making sure grooves of brace fit around housing ribs Fig 9.
11. Slide insert bar to the right, see Step 2 & Fig 1, over right side pin housing lining up groove and rib.
12. Align holes on cross brace and insert, Fig 10. Secure with saved bolt, washers, and nut from Step 1.
13. Make sure all nuts and bolts are tightened securely.



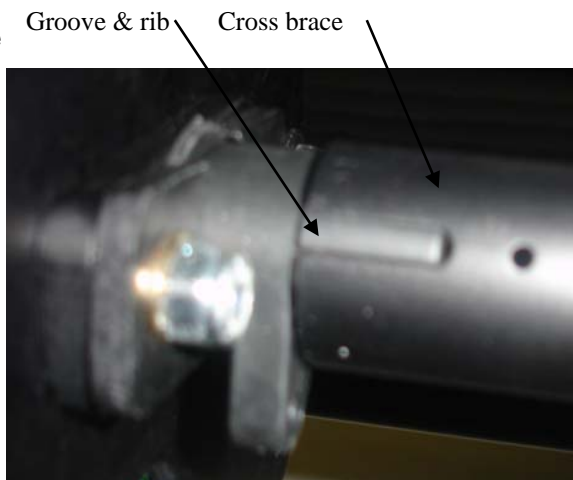
Fig. 6

Leave this 'e' ring      Remove end 'e' ring

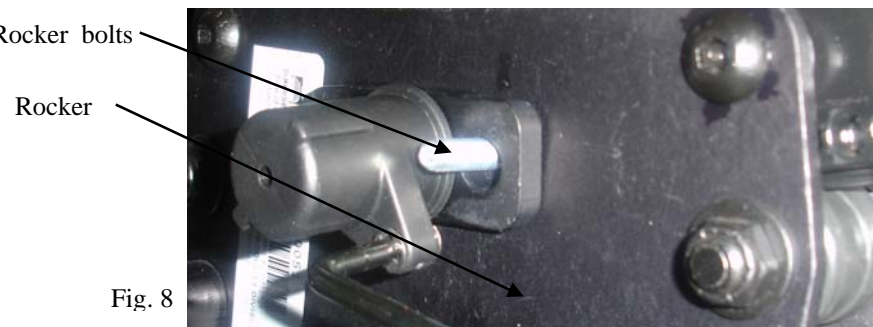


Rod housing

Fig. 7



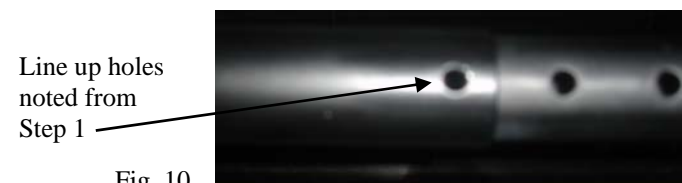
Groove & rib      Cross brace



Rocker bolts

Rocker

Fig. 8



Line up holes noted from Step 1

Fig. 10

**FOR DEALER USE** Installed by: \_\_\_\_\_ Date: \_\_\_\_\_ (retain as record of installation)