

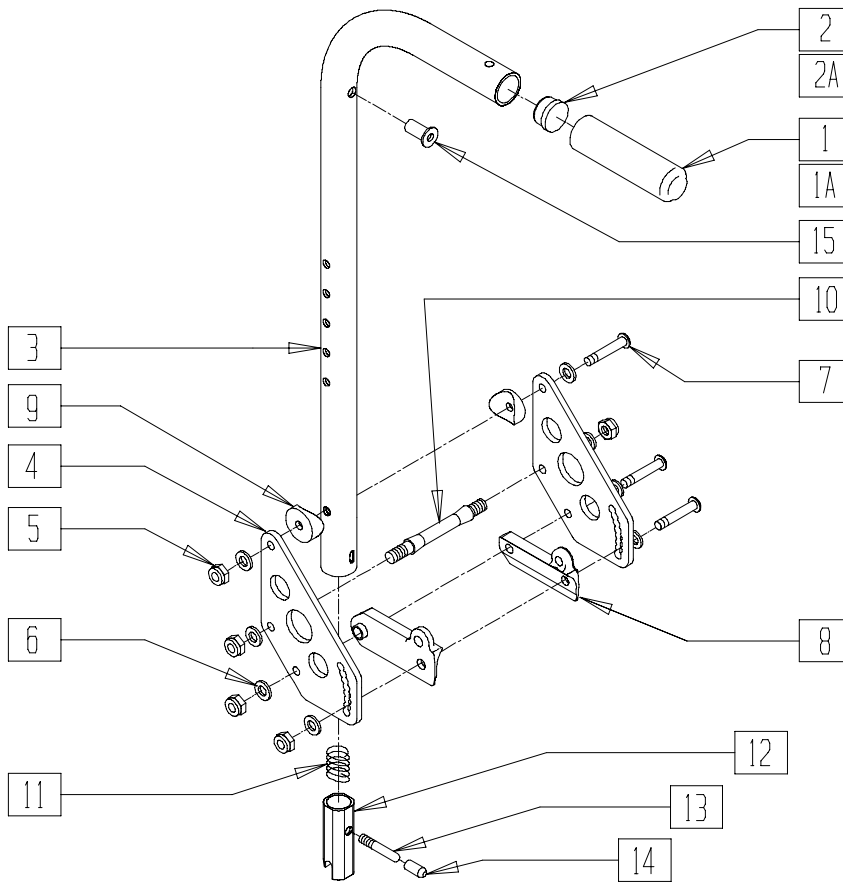
# Pediatric and Positioning Chair Backrests and Upholstery

## IN THIS SECTION

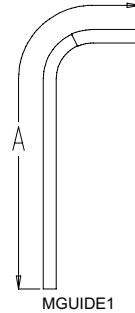
Backrest (Quickie TS/Zippie TS) .....	10.1	Stroller Handle (Quickie Kidz).....	10.5
Swing-Away Adjustable Stroller Handle (Quickie TS/Zippie TS) .....	10.2	Solid Seat and Solid Back (Quickie TS).....	10.6
Swing-Away Adjustable Stroller Handle Retro Kit (Quickie TS/ Zippie TS) .....	10.3	Solid Back (Quickie T45) .....	10.6
Stroller Handle Extension -Removable (Quickie TS/Zippie TS) .....	10.4	Backrest and Upholstery (Quickie Kidz).....	10.7
Stroller Handle Extension -Removable (Quickie T45) .....	10.4	Folding Backrest (Quickie Kidz) .....	10.8
Solid Seat and Solid Back (Zippie/Zippie TS) .....	10.5	60° Reclining Back Assembly (Quickie TS).....	10.9
		Back Frame (Reclining Back) (Quickie T45) .....	10.10
		Back Frame (Fixed Back Tilt) (Quickie T45).....	10.11

# BACKREST (QUICKIE TS/ZIPPIE/ZIPPIE TS)

(Effective 11/1/2002)



## MEASURING GUIDE



BACK TUBE	"A"
STD	25 3/4"
MED	28 3/4"
TALL	31 3/4"

NOTE: ABOVE DIMENSIONS ARE FOR BACK TUBE ONLY AND DO NOT INCLUDE FOAM GRIP.

Drawing shows right side

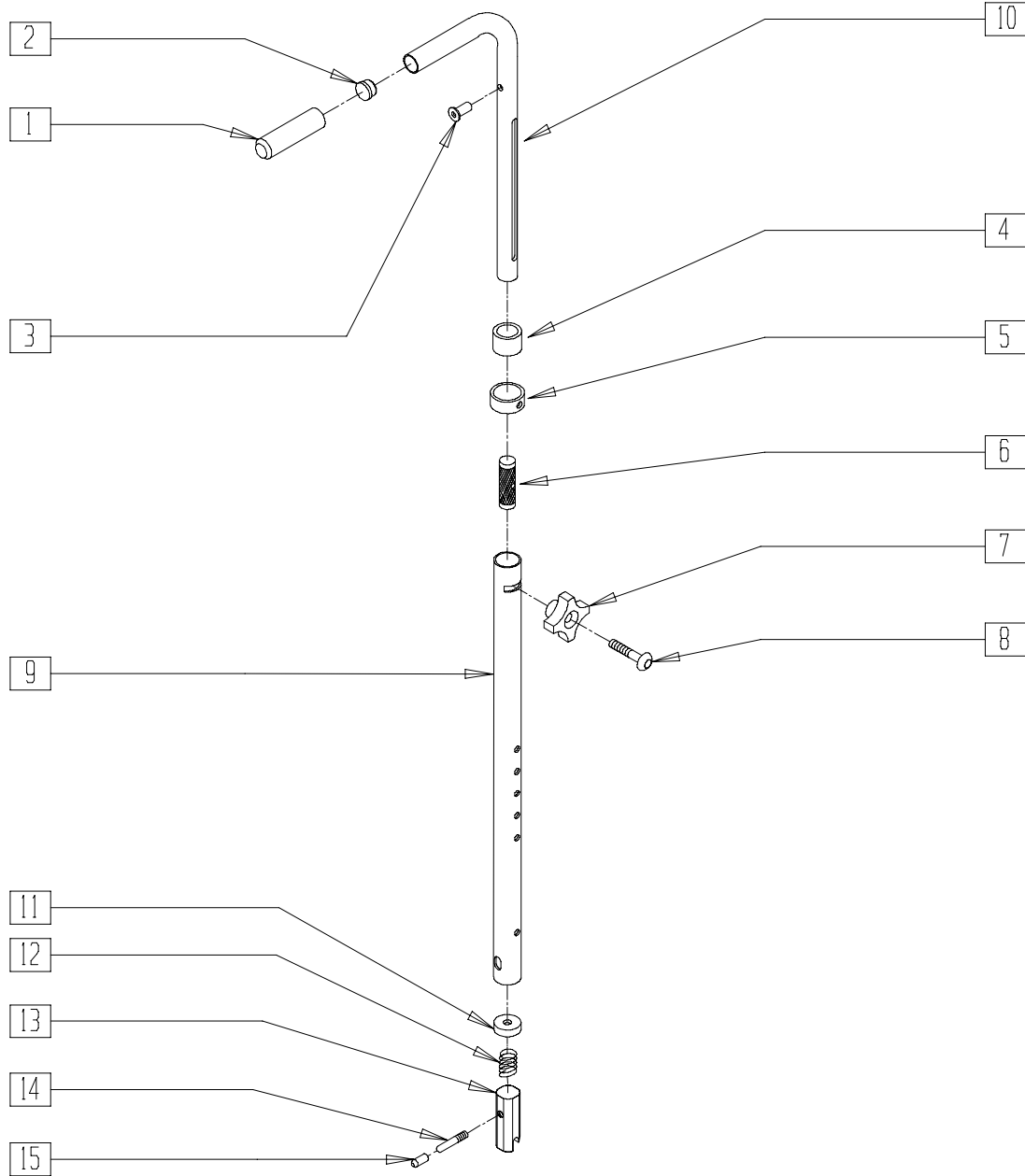
ZP200X05B

ITEM	NUMBER	DESCRIPTION	QTY
1	560663	QUICKIE GRIP 1"	1
1A	560660	QUICKIE GRIP 1" W/HOLE	1
2	561002	1" INSERT PLUG .083	1
2A	561082	1" TUBE END BUSHING THIN	1
4	506136	BACKPLATE DAB	2
5	201100-QU	1/4-28 NYLOCK NUT THIN	5
6	262100-QU	1/4 AN WASHER FLAT	8
7	226150	1/4-28 x 2 BH C/S	4
8	560518, 560519	SADDLE BACKREST Q2 DAB (EA)	1
9	561004	1" SADDLE 1/4" HOLE	2
10	481042	BACK RELEASE STOP PIN QTS	1
11	321110	S/A LATCH SPRING	1
12	483019	BACK RELEASE LATCH	1
13	481084	BACK RELEASE PIN Z2/QT/EX	1
14	560502	ANTI-TIP LEVER COVER	1
15	341497	10-32 x .020-.130 RIVNUT GOLD	1
5-8,10	920539	BACKPLATE DAB HDWR KIT	
5-9	920921	BACK PLATE HARDWARE KIT ZTS	
5-8,10-14	920328	BACKREST LATCH KIT	
1-3,15	842079	STRL HANDLE W/FOAM MED ZPS/QT	
	842080	STRL HNDL W/FOAM STD ZPS/P5/QT	
	842081	STRL HANDLE W/FOAM TALL ZPS/QT	

ITEM	NUMBER	DESCRIPTION	QTY
1-3,11-15	920389	STRL HNDL W/LTCH MED ZPS/P5/QTS	
	920390	STRL HANDLE W/LATCH ZPS/P5/QT	
	920391	STRL HNDL W/LATCH TALL ZPS/P5/QT	
1-15	881845	STRL HNDL MED&PLT ASSM DAB	
	881846	STRL HNDL STD&PLT ASSM DAB	
	881847	STRL HNDL TLL&PLT ASSM DAB	
	920999	STRL HNDL M AND PLTE ASSM ZTS	
	920945	STRL HNDL STD AND PLT ASSM ZTS	
1A,2A,3,15	920947	STRL HNDL T AND PLT ASSM ZTS	
	842066	EXT STROLLER HANDLE MED	
	842067	EXT STROLLER HANDLE STD	
1A,2A,3,11-15	842068	EXT STROLLER HANDLE TALL	
	920423	EXT STROLLER HNDL MED W/LATCH	
	920421	EXT STROLLER HNDL STD W/LATCH	
1A,2A,3-15	920424	EXT STROLLER HNDL TALL W/LATCH	
	920761	EXT STRL HNDL MED&PLT ASSM DAB	
	920762	EXT STRL HNDL STD&PLT ASSM DAB	
	920763	EXT STRL HNDL TLL&PLT ASSM DAB	
	920981	EXT STRLR HNDL M PLST ASSM ZTS	
	920948	EXT STRLR HNDL STD PLT ASM ZTS	
	920949	EXT STRLR HNDL T PLT ASSM ZTS	

NOTE: HOLE ON TOP OF STROLLER HANDLE (FOR STROLLER HANDLE EXTENSION) EFFECTIVE 12/21/93. BEGINNING SERIAL NUMBER ZP-32105.

# SWING-AWAY ADJUSTABLE STROLLER HANDLE (QUICKIE TS/ZIPPIE/2)



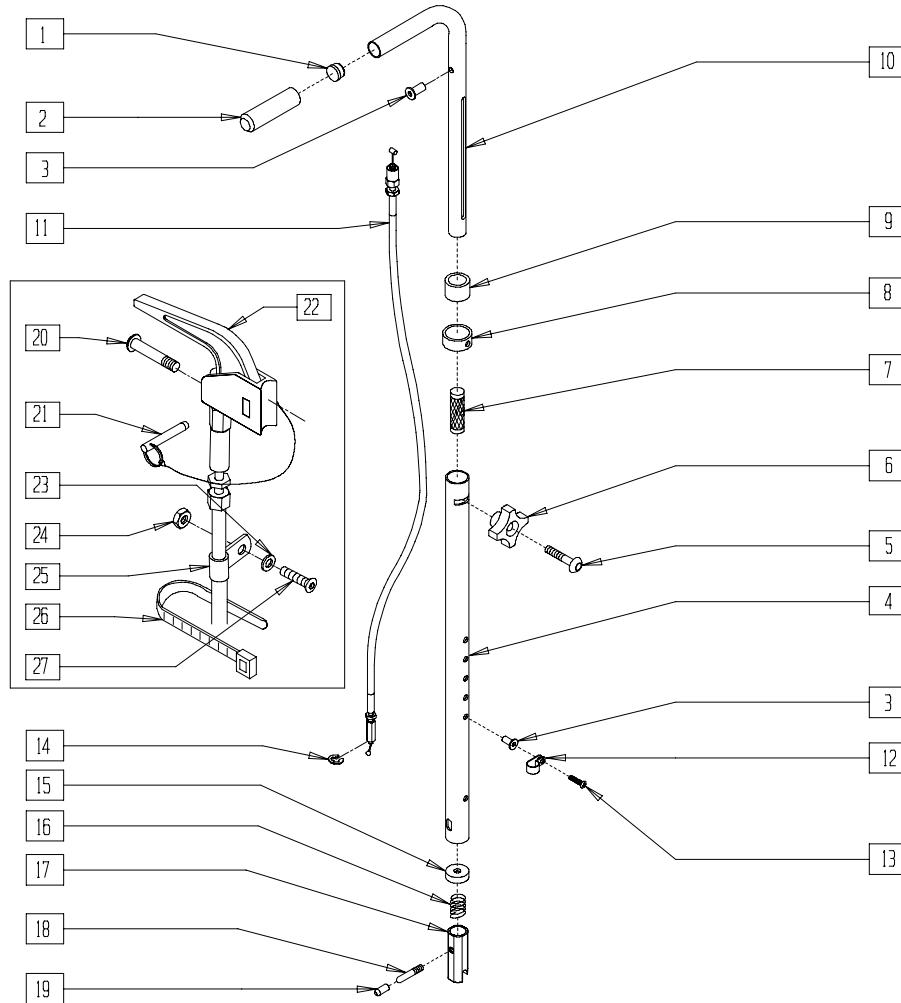
Drawing shows right side

ZPSH1X01

ITEM	NUMBER	DESCRIPTION	QTY
1	560662	QUICKIE GRIP 3/4"	1
2	561000-QU	3/4" INSERT PLUG .083	1
3	341500	10-32 x .010-.080 RIVNUT	1
4	561082	1" TUBE END BUSHING THIN	1
5	483096	S/A ADJ STROLLER RING ZP/QT	1
6	483095	S/A ADJ STROLLER INSERT ZP/QT	1
7	349018	KNOB S/A ADJ STROLLER ZP	1
8	226136	1/4-20 x 1 1/2 BH C/S BLK	1
9	521791, 521792	S/A ADJ BACK TUBE ONLY ZP/QT (EA)	1

ITEM	NUMBER	DESCRIPTION	QTY
10	521793, 521794	S/A ADJ STROLLER TUBE PUSH HANDLE ZP/QT (EA)	1
11	483020	S/A SPRING RETAINER	1
12	321110	S/A LATCH SPRING	1
13	483019	BACK RELEASE LATCH	1
14	481084	BACK RELEASE PIN Z2/QT/EX	1
15	560502	ANTI-TIP LEVER COVER	1
1-10	842082, 842083	S/A ADJ STROLLER HANDLES W/FOAM (EA)	
1-10	920306	S/A ADJ STROLLER HANDLES (PR)	
11-15	920291	BACKREST SLIDER LATCH KIT	

# SWING-AWAY ADJUSTABLE STROLLER HANDLE RETRO KIT (QUICKIE TS/ZIPPIE TS)



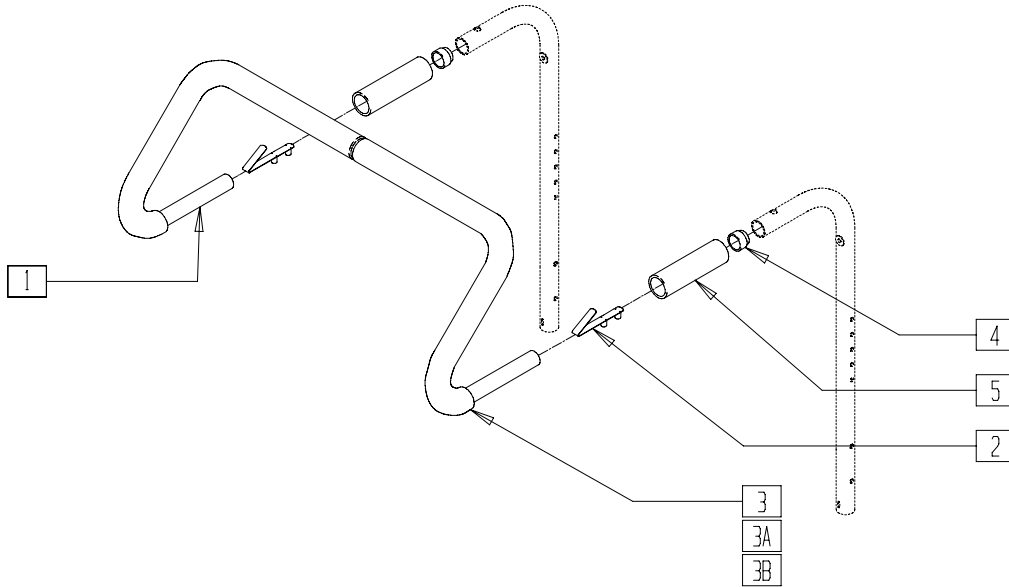
Drawing shows right side

ZP2SH2X0

ITEM	NUMBER	DESCRIPTION	QTY
1	561000-QU	3/4" INSERT PLUG .083	1
2	560662	QUICKIE GRIP 3/4"	1
3	341497	10-32 x .020-.130 RIVNUT GOLD	2
4	521791, 521792	S/A ADJ BACK TUBE ONLY ZP/QT (EA)	1
5	226136	1/4-20 x 1 1/2 BH C/S BLK	1
6	349018	KNOB S/A ADJ STROLLER ZP	1
7	483095	S/A ADJ STROLLER INSERT ZP/QT	1
8	483096	S/A ADJ STROLLER RING ZP/QT	1
9	561082	1" TUBE END BUSHING THIN	1
11	342057	CYL LOCK CABLE ASSEMBLY (ZP/TS)	1
	342056	CYL LOCK CABLE ASSEMBLY T45 (QTS)	
12	349511	1/2" ID PLASTIC CLAMP BLK	1
13	281120	10-32 x 5/8 PAN HD PHIL	1
14	342000	1/4" E-CLIP	1
15	483020	S/A SPRING RETAINER	1
16	321110	S/A LATCH SPRING	1
17	483019	BACK RELEASE LATCH	1
18	481084	BACK RELEASE PIN Z2/QT/EX	1
19	560502	ANTI-TIP LEVER COVER	1
20	281120	10-32 x 5/8 PAN HD PHIL	1-2
21	349021	TRIGGER RELEASE PIN TS/QT/P5	1-2

ITEM	NUMBER	DESCRIPTION	QTY
22	580110	CYL LOCK LEVER ASSEMBLY QT/QR/P5	1-2
23	261204	#10 AN WASHER .063	1-2
24	200100	10-32 NYLOCK NUT	1-2
25	349511	1/2" ID PLASTIC CLAMP BLK	1-2
26	560410	ZIP TIE BLACK	1-2
27	226032	10-32 x 1 1/2 BH C/S BLK	1-2
1-10	842082, 842083	S/A ADJ STROLLER HANDLE W/FOAM (EA)	
	920306	S/A ADJ STROLLER HANDLES ZP/Z2 (PR)	
1-19	920304	S/A ADJ STROLLER RETRO KIT QTS (PR)	
1-14, 20-27	842084, 842085	TS ADJ PUSH HANDLE TUBE W/TRIGGER (EA)	
	842073, 842074	QTS ADJ PUSH HANDLE TUBE W/TRIGGER (EA)	
1-14,20-27	920297	S/A ADJ STROLLER 15"-20" QTS (PR)	
1-14, 20-27	920307	S/A ADJ STROLLER 10"-14" TS (INCLUDES TRIGGER ON RIGHT SIDE) (PR)	
	920308	S/A ADJ STROLLER 15"-20" TS (INCLUDES TRIGGER ON BOTH SIDES) (PR)	
15-19	920291	BACKREST SLIDER LATCH KIT	

## STROLLER HANDLE EXTENSION - REMOVABLE (QUICKIE TS/IRIS/ZIPPIE/TS)



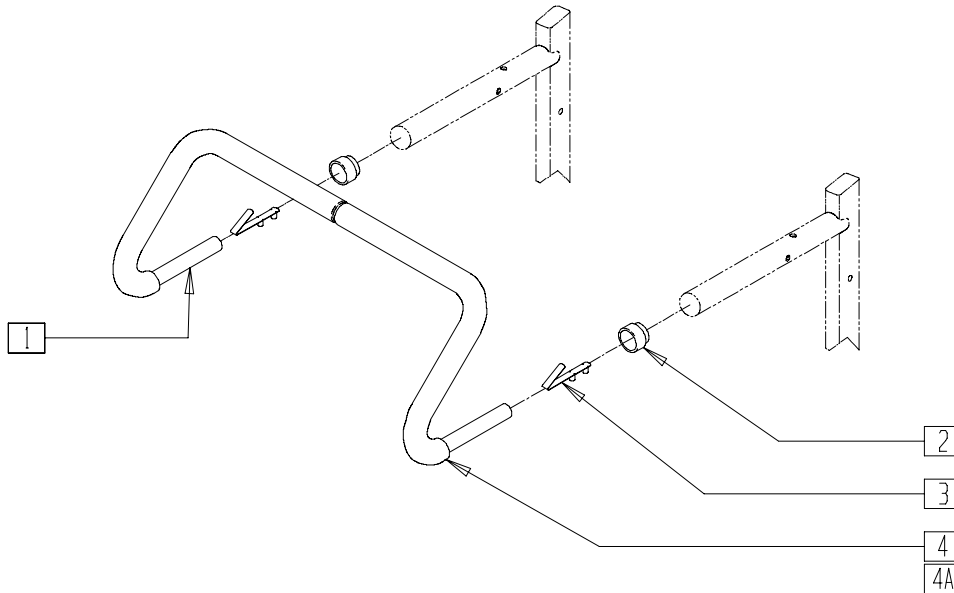
ARMX10A

ITEM	NUMBER	DESCRIPTION	QTY
2	301108	5/16 SNAP BUTTON DUAL ONE SIDE	2
3	560615	STROLLER EXTENSION GRIP 10"-13"	2
3A	560616	STROLLER EXTENSION GRIP 14"-17"	2
3B	560617	STROLLER EXTENSION GRIP 18"-20"	2
4	561082	1" TUBE END BUSHING THIN	2
5	560660	QUICKIE GRIP 1" W/HOLE	2

ITEM	NUMBER	DESCRIPTION	QTY
1,2,3	842050-842053	STROLLER EXTENSION ASSEMBLY 10"-13"	
1,2,3A	842054-842057	STROLLER EXTENSION ASSEMBLY 14"-17"	
1,2,3B	842058, 842059, 842063	STROLLER EXTENSION ASSEMBLY 18"-20"	

NOTE: NOT AVAILABLE WITH SWING-AWAY ADJUSTABLE STROLLER HANDLES.  
NOTE: FITS ON BOTH STROLLER HANDLE BACKPOSTS AND REMOVABLE STROLLER HANDLES.

## STROLLER HANDLE EXTENSION - REMOVABLE (QUICKIE T45)

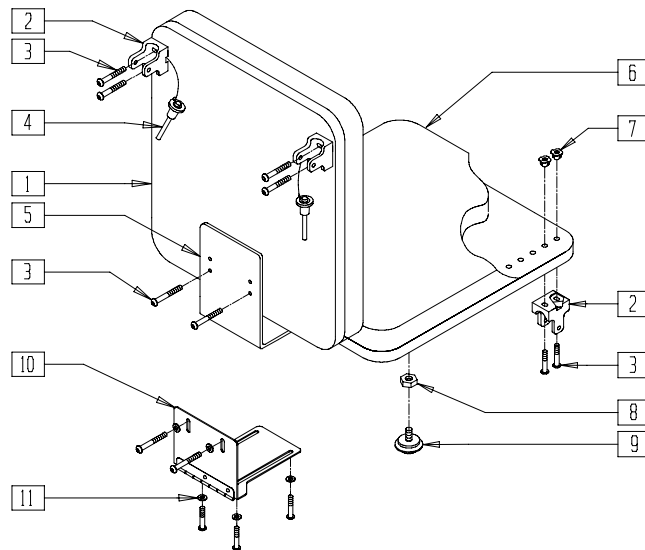


TSR00X30

ITEM	NUMBER	DESCRIPTION	QTY
2	561082	1" TUBE END BUSHING THIN	2
3	301108	5/16 SNAP BUTTON DUAL ONE SIDE	2
4	560616	STROLLER EXTENSION GRIP 14"-17"	2
4A	560617	STROLLER EXTENSION GRIP 18"-20"	2

ITEM	NUMBER	DESCRIPTION	QTY
1-4	842214-842217	STROLLER EXTENSION ASSEMBLY 14"-17" T45	
1-3,4A	842218-842220	STROLLER EXTENSION ASSEMBLY 18"-20" T45	

## SOLID SEAT AND SOLID BACK (ZIPPIE/ZIPPIE TS)

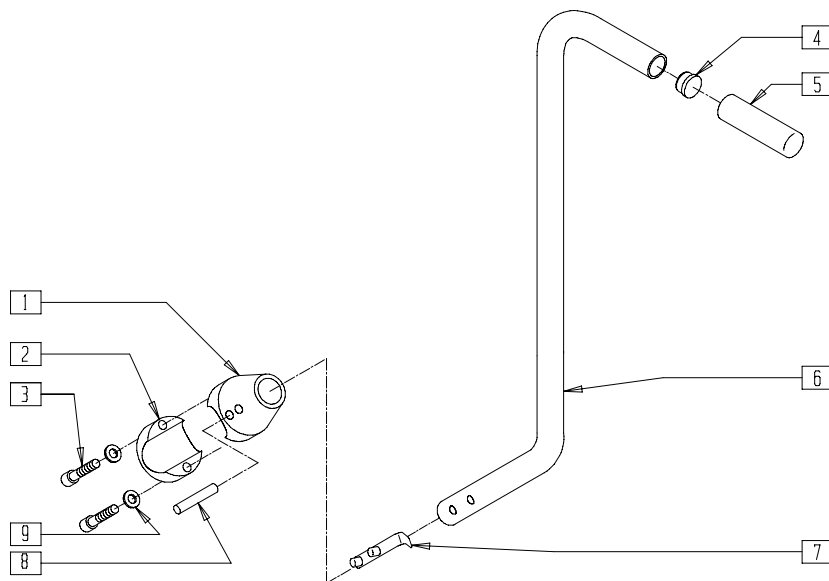


Z00X6A

ITEM	NUMBER	DESCRIPTION	QTY
1,8	735050-735070	PLY BACK 10"-16" (SPECIFY COLOR)	
2	562609	BRACKET SEAT QTS/BACK Z2	4
3	226101	1/4-20 x 3/4 BH C/S	14
4	349020	STROLLER HANDLE RELEASE PIN	2
5	505253	QT SEAT/BACK BRACKET NEW	1
7	2400	1/4-20 X 5/16" T-NUTS 3 PRONG	7-11
6,7	735000-735041	PLY SEAT 10"-16" (SPECIFY COLOR)	

ITEM	NUMBER	DESCRIPTION	QTY
8	201121	1/4-20 NUT THIN	2
9	349560	ZP RUBBER STOP	2
10	450990	SEAT TO BACK BRKT 90D CV	1
11	262100-QU	1/4 AN WASHER FLAT	6
2-4,8,9	920451	ST/BACK HDWR KT STD BRKT ZP	
2-4,8,9,11	920452	ST/BCK HDWR KIT HNG BRKT ZP	

## STROLLER HANDLE (QUICKIE KIDZ)

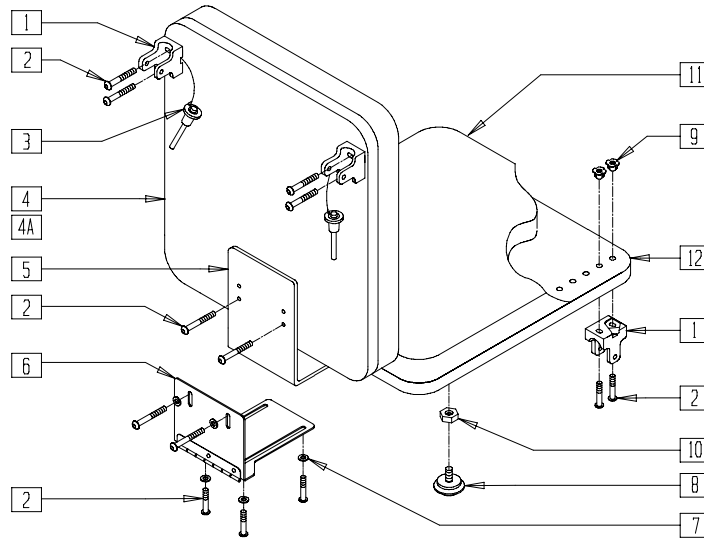


KDZ00X17

ITEM	NUMBER	DESCRIPTION	QTY
1	483030	STROLLER HANDLE RECEIVER TOP KIDZ	1
2	483031	STROLLER HANDLE REC BOTTOM KIDZ	1
3	221126	1/4-20 x 1 1/4 G8 HEX C/S	2
4	482028	3/4" DOME PLUG .125	1
5	560662	QUICKIE GRIP 3/4"	1
6	521605	STROLLER HANDLE KIDZ	1

ITEM	NUMBER	DESCRIPTION	QTY
7	301109	SNAP BUTTON DUAL ONE SIDE	1
8	341201	1/4 x 1 1/4 ROLL PIN	1
9	262100-QU	1/4 AN WASHER FLAT	2
1,8	883030	STROLLER HANDLE RECEIVER W/PIN	
1-3,8,9	842075	STROLLER HANDLE RECEIVER ASSM KIDZ	
4-7	842065	STROLLER HANDLE W/FOAM KIDZ	

## SOLID SEAT AND SOLID BACK (QUICKIE TS)



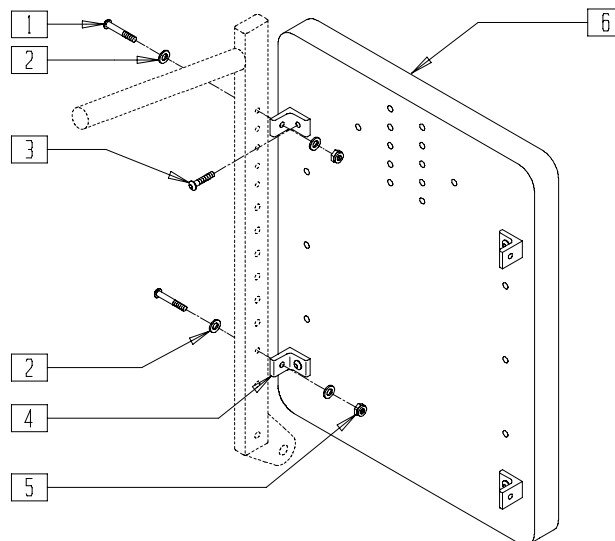
AZ00X08

ITEM	NUMBER	DESCRIPTION	QTY
1	562609	BRACKET SEAT QTS/BACK Z2	4
2	226101	1/4-20 x 3/4 BH C/S	12
3	349020	STROLLER HANDLE RELEASE PIN	2
4	731501-731522	PLY BACK QT (16" x 18" - 20" x 20")	1
4A	731082-731093	PLY BACK BOARD W/T-NUT QT	1
5	505253	QT SEAT/BACK BRACKET NEW	1
6	450990	SEAT TO BACK BRKT 90D CV	1
7	262100-QU	1/4 AN WASHER FLAT	4

ITEM	NUMBER	DESCRIPTION	QTY
8	349560	ZP RUBBER STOP	2
9	2400	1/4-20 X 5/16" T-NUTS 3 PRONG	18
9,12	730854-730899	PLYWD ST BPLY ST QTRD W/NUT QT	1
10	201121	1/4-20 NUT THIN	2
11	730504-730549	PLY SEAT QT	
1-3,5,8	920326	QT SEATING HARDWARE KIT NEW	
1-3,8,10	920451	ST/BCK HDWR KIT STD BRACKET ZP	

NOTE: WHEN ORDERING QTS SOLID SEAT/BACK, PLEASE SPECIFY HOLE PATTERN.

## SOLID BACK (QUICKIE T45)



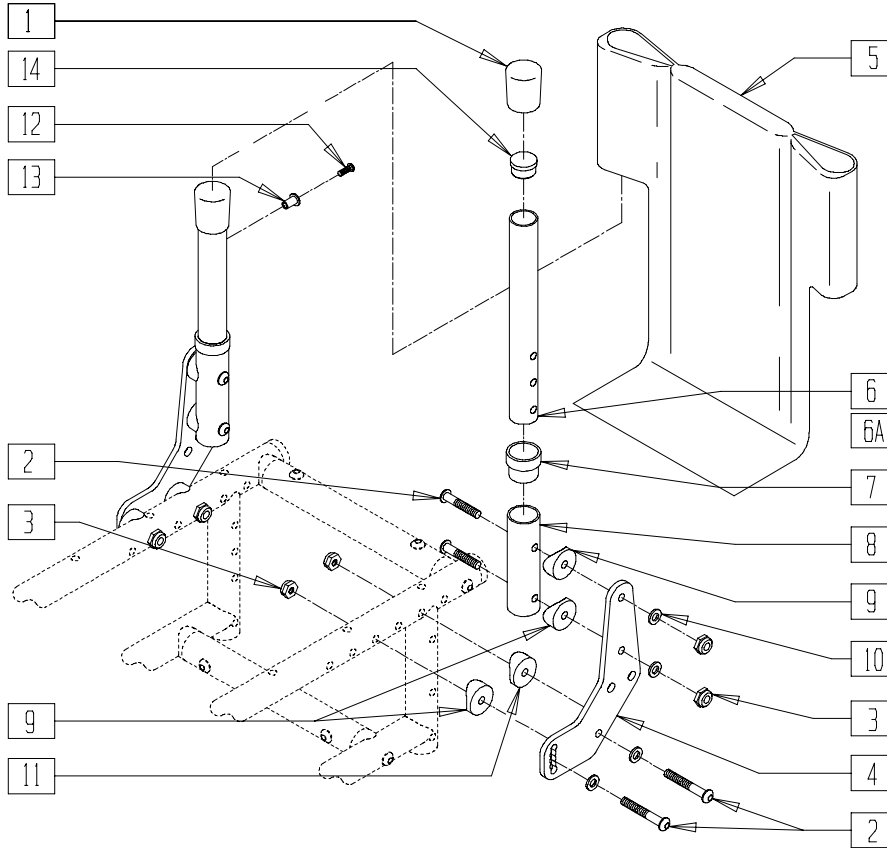
TSR00X17

ITEM	NUMBER	DESCRIPTION	QTY
1	226130	1/4-28 x 1 1/2 BH C/S	4
2	262100-QU	1/4 AN WASHER FLAT	8
3	226101	1/4-20 x 3/4 BH C/S	4
4	550148	SEAT/BACK BRACKET T45	4

ITEM	NUMBER	DESCRIPTION	QTY
5	201110-QU	1/4-28 NYLOCK NUT	4
6	732184-732190	PLY BACK 14" x 20" - 20" x 20" T45	
1-5	881208	HARDWARE KIT T45 SOLID BACK	

# BACKREST AND UPHOLSTERY (QUICKIE KIDZ)

(Effective serial number KZ-7265)



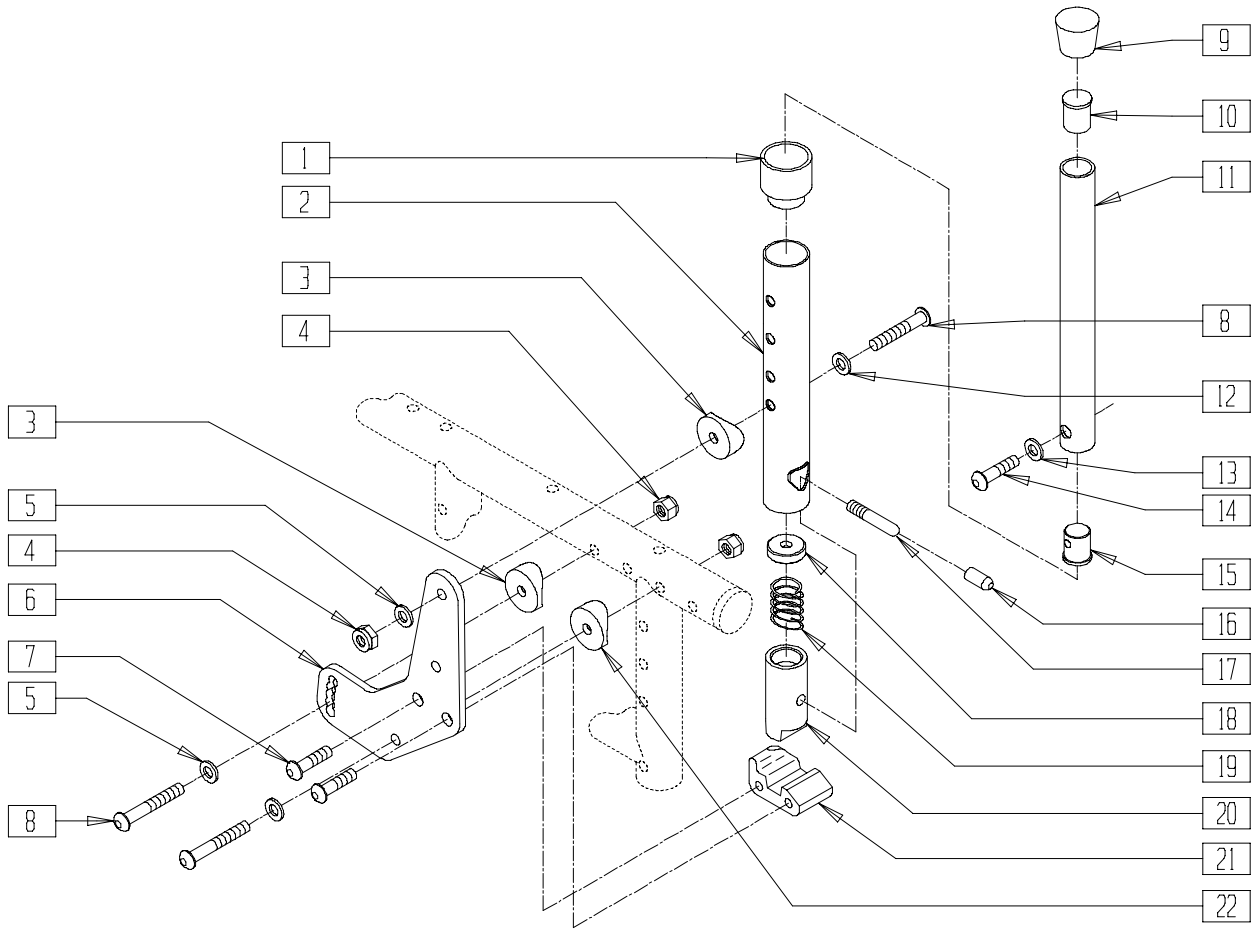
KDZ00X25

ITEM	NUMBER	DESCRIPTION	QTY
1	561013	7/8" CAP	2
2	226140	1/4-28 x 1 3/4 BH C/S	8
3	201110	1/4-28 NYLOCK NUT	8
4	500195	BACK PLATE KIDZ/EX	2
5	684230- 684244	BACK UPHOLSTERY KIDZ 10" REG - 14" TALL	1
6	840122	BACK TUBE W/RIVNUT 8"-10" KIDZ	2
6A	840123	BACK TUBE W/RIVNUT 10"-12" KIDZ	2
7	561310	BC 1" TUBE END BUSHING CM	2

ITEM	NUMBER	DESCRIPTION	QTY
8	520305	BACK TUBE RECEIVER KIDZ	2
9	561004	1" SADDLE 1/4" HOLE	6
10	262110-QU	1/4 AN WASHER FLAT THIN	8
11	561086	1" HALF SADDLE 1/4" HOLE	2
12	281120	10-32 x 5/8 PAN HD PHIL	2
13	341497	10-32 x .020-.130 RIVNUT GOLD	2
14	561007	7/8" INSERT PLUG .083	2
2-4,7-11	880616, 880617	KIDZ BACK RECEIVER W/PLT AND HDWR (EA)	



# FOLDING BACKREST (QUICKIE KIDZ)

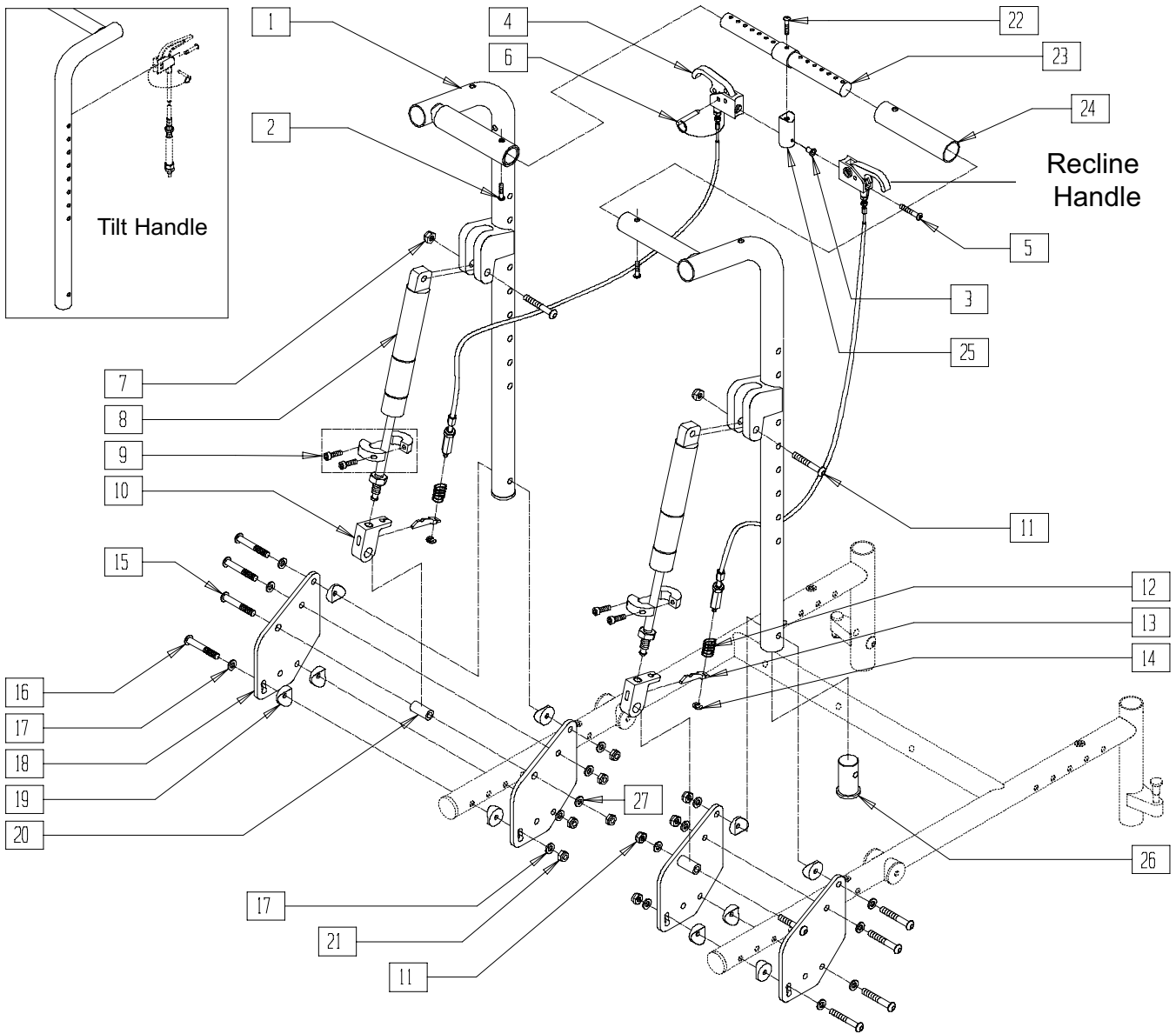


KDZ00X23

ITEM	NUMBER	DESCRIPTION	QTY
1	561082	1" TUBE END BUSHING THIN	2
2	520753	BACKREST TUBE SLOT KIDZ	2
3	561004	1" SADDLE 1/4" HOLE	2
4	201110	1/4-28 NYLOCK NUT	6
5	262110-QU	1/4 AN WASHER FLAT THIN	6
6	500195	BACK PLATE KIDZ/EX	2
7	226182	5/16-18 x 1 BH C/S	4
8	226140	1/4-28 x 1 3/4 BH C/S	6
9	561010	3/4" CAP	2
10	561000-QU	3/4" INSERT PLUG .083	2
9-11	840098	BACK ADJUSTABLE TUBE 8"-10" KIDZ	
13-15	840099	BACK ADJUSTABLE TUBE 10"-12" KIDZ	
12	262100-QU	1/4 AN WASHER FLAT	2
13	262130	6mm WASHER WAVE	2
14	226120	1/4-20 x 1 BH C/S	2

ITEM	NUMBER	DESCRIPTION	QTY
15	483001	Q2 FRAME/FOOT RETAINING PLUG	2
16	560502	ANTI-TIP LEVER COVER	2
17	481084	BACK RELEASE PIN Z2/QT/EX	2
18	483020	S/A SPRING RETAINER	2
19	321110	S/A LATCH SPRING	2
20	483806	BACKREST LATCH SLIDER KIDZ	2
21	550340, 550341	BCKRST LATCH BLOCK P2/KIDZ (EA)	1
22	561086	1" HALF SADDLE 1/4" HOLE	2
3-8, 21,22	880670, 880671	BCK PLATE FOLD W/HDWR KIDZ (EA)	
1-5,8, 16-20	840124, 840125	BACKREST TUBE W/LATCH KIDZ (EA)	
1-22	923450 923451	KIDZ FOLDING BACK RETRO 8"-10" KIDZ FOLDING BACK RETRO 10"-12"	

# 60° RECLINING BACK ASSEMBLY (QUICKIE TS)

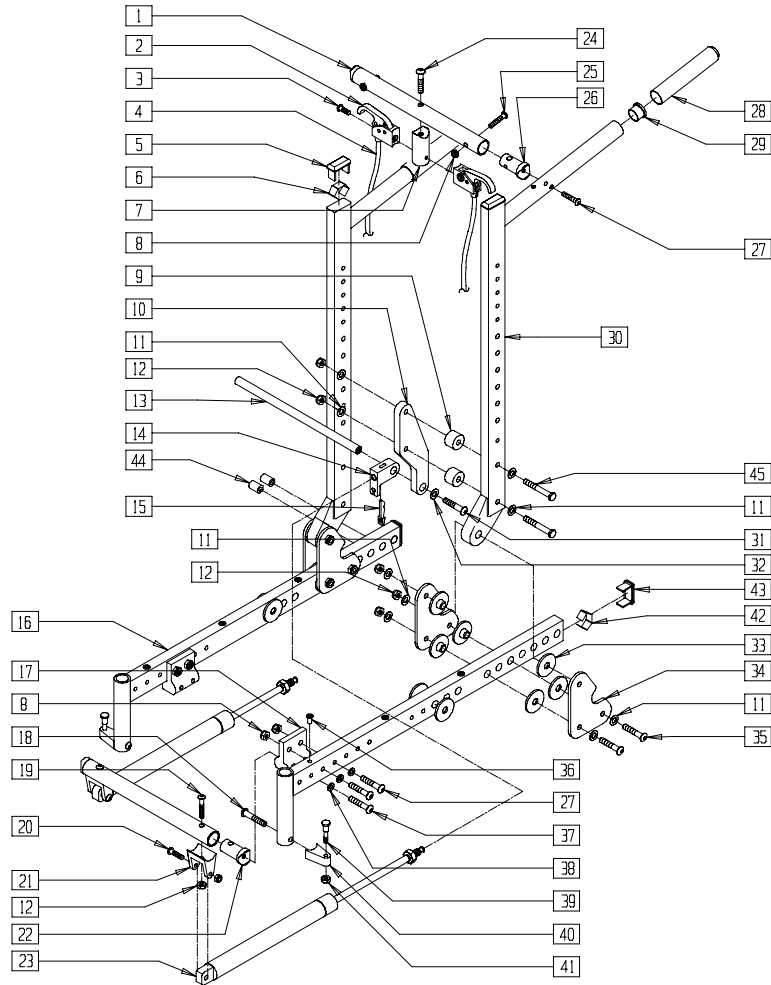


QTS20X09B

ITEM	NUMBER	DESCRIPTION	QTY
1	541502-541505	BACK TUBE WELDMENT MEDIUM/TALL QTS (EA)	1
2	226110	1/4-28 x 1 BH C/S	2
3	341497	10-32 x .020-.130 RIVNUT GOLD	2
4	580111	CYL LOCK LEVER ASSM RCLNR	2
5	281120	10/32 x 5/8 PAN HD PHIL	2
6	349021	TRIGGER RELEASE PIN TS/QT/P5	2
7	202102	5/16-18 NYLOCK NUT THIN	4
8	342065	BLOC-O-LIFT 200 N x 11.58"	2
9	342049	10mm ID SPLIT COLLAR	2
10	880148	GAS SPRING BLOCK W/BUSHING QTS	2
11	222108	5/16-18 x 1 1/4 BH C/S	2
12	321141	.650L x 6 COIL SPRING	2
13	560686	GAS SPRING LEVER T45	2
14	342000	1/4" E-CLIP	2

ITEM	NUMBER	DESCRIPTION	QTY
15	226198	5/16-18 x 2 BH C/S SHT THREAD	2
16	226150	1/4-28 x 2 BH C/S	8
17	262100-QU	1/4 AN WASHER FLAT	16
18	500215	RECLINING BACK LOWER BRACKET QTS	4
19	561004	1" SADDLE 1/4" HOLE	12
20	483179	RECLINING BACK PIVOT STUD QTS	2
21	201100-QU	1/4-28 NYLOCK NUT THIN	8
22	222256	5/16-18 x 1 1/2 BH C/S	1
23	500775	ADJ BAR QTS RECLINING BACK	1
24	560664	FOAM GRIP RECLINING BACK QTS	2
25	483139	T45 RELEASE LEVER MNTG BLOCK	1
26	483169	RECLINING BACK TUBE PLUG QTS	2
27	263100	5/16 AN WASHER FLAT	2
1-27	921585	60° RECLNG BACK MED RETRO KIT TS	
1-27	921586	60° RECLNG BACK TLL RETRO KIT TS	

# BACK FRAME (RECLINING BACK) (QUICKIE T45)

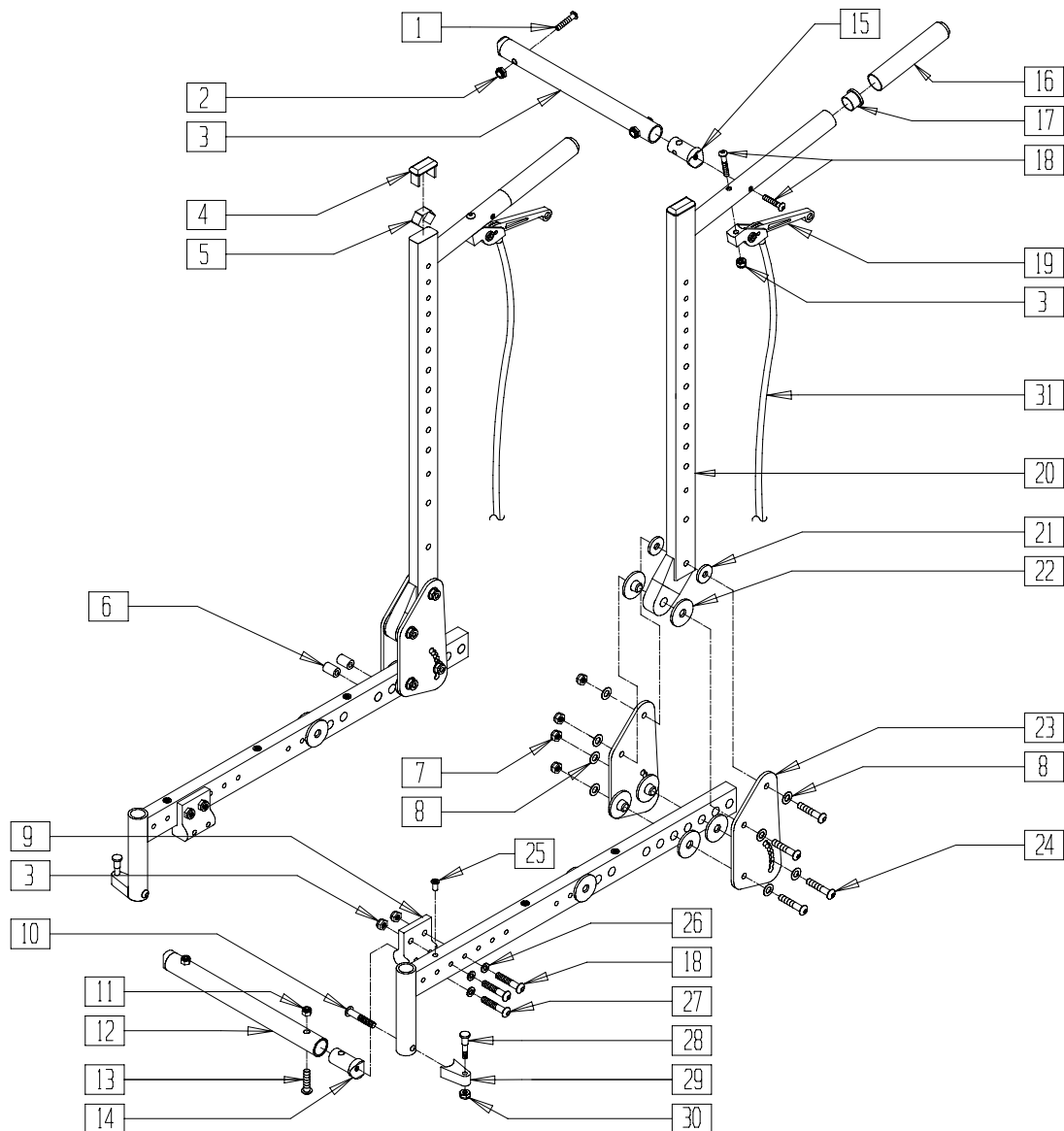


TSR00X02A

ITEM	NUMBER	DESCRIPTION	QTY
1	522874-522880	T45 BACK STRUT TUBE 14"-20"	1
2	580111	CYL LOCK LEVER ASSEMBLY RECLINER	2
3	281120	10/32 x 5/8 PAN HD PHIL	2
4	342057	CYL LOCK CABLE ASSEMBLY	2
5	561372	3/4 x 1 1/2 RECT TUBING CAP	4
6	540190	RECT TUBING CAP SPRING P2	4
7	483139	T45 RELEASE LEVER MNTG BLOCK	1
8	201100-QU	1/4-28 NYLOCK NUT THIN	2,4
9	340405	SPACER 1.00 x .33 x 1.06	4
10	550243	T45 BACK RECLINER BRACKET	2
11	263100	5/16 AN WASHER FLAT	20
12	202102	5/16-18 NYLOCK NUT THIN	14
13	481364-481370	T45 RECLINER PIVOT ROD 14"-20"	1
14	483147	T45 GAS SPRING BLOCK	2
15	560686	GAS SPRING LEVER T45	2
17	550147	T45 GAS SPRING MNTG BRACKET TOP	1,2
18	226190	5/16-18 x 1 3/4 BH C/S SHLDR	2
19	226138	5/16-24 x 1 1/2 BH C/S	4
20	522834-522840	STRUT TUBE T45 14"-20"	1
21	500145	CYLINDER BRACKET T45	2
22	483118	STRUT SADDLE T45	2
23	342064	BLOC-O-LIFT 200 N x 15.88"	2
24	222256	5/16-18 x 1 1/2 BH C/S	1
25	226131	1/4-28 x 1 1/4 BH C/S SHLDR	2

ITEM	NUMBER	DESCRIPTION	QTY
26	483038	STRUT SADDLE ZP/P5/KZ	4
27	226130	1/4-28 x 1 1/2 BH C/S	2,4
28	560663	QUICKIE GRIP 1"	2
29	561002	1" INSERT PLUG .083	2
30	842160	BACK TUBE PNTD T45	2
31	226182	5/16-18 x 1 BH C/S	2
32	263118	5/16 WASHER TYPE BR SERIES	2
33	560800	FRAME BUSHING T45/P3N	16
34	505723	BACK PIVOT PLATE T45	4
35	226195	5/16-18 x 1.82 BH C/S	6
36	341497	10-32 x .020-.130 RIVNUT GOLD	3,6
37	226140	1/4-28 x 1 3/4 BH C/S	2
38	262100-QU	1/4 AN WASHER FLAT	4
39	481023	S/A LATCH STUD NEW	2
40	551310	LATCH STUD SUPPORT BLK	2
41	201100-QU	1/4-28 NYLOCK NUT THIN	2
42	540190	RECT TUBING CAP SPRING P2	1
43	561372	3/4 x 1 1/2" RECT TUBING CAP	1
44	561057	T45 FRAME PLUG PLASTIC	5
45	222243	5/16-18 x 2 3/4 HEX C/S	4
8,16,17,27,36,38,42-44	600162, 600164	SEAT S/F PNTD T45	
2-4,9-15,19,21,23,24,31-35,45	880014-880020	CONV KIT RECLINER BACK T45 14"-20"	
18,39-41	921295	S/A LATCH ASSM BLK W/BOLT CLR	

# BACK FRAME (FIXED BACK TILT) (QUICKIE T45)



TSR00X03A

ITEM	NUMBER	DESCRIPTION	QTY
1	226131	1/4-28 x 1 1/4 BH C/S SHLDR	2
2	522874-522880	T45 BACK STRUT TUBE 14"-20"	1
3	201100-QU	1/4-28 NYLOCK NUT THIN	6
4	561372	3/4 x 1 1/2" RECT TUBING CAP	2
5	540190	RECT TUBING CAP SPRING P2	2
6	561057	T45 FRAME PLUG PLASTIC	10
7	202102	5/16-18 NYLOCK NUT THIN	8
8	263100	5/16 AN WASHER FLAT	16
9	550147	T45 GAS SPRING MNTG BRKT TOP	2
10	226190	5/16-18 x 1 3/4 BH C/S SHLDR	2
11	202102	5/16-18 NYLOCK NUT THIN	2
12	522834-522840	STRUT TUBE T45 14"-20"	1
13	222108	5/16-18 x 1 1/4 BH C/S	2
14	483118	STRUT SADDLE T45	2
15	483038	STRUT SADDLE ZP/P5/KZ	2

ITEM	NUMBER	DESCRIPTION	QTY
16	560663	QUICKIE GRIP 1"	2
17	561002	1" INSERT PLUG .083	2
18	226130	1/4-28 x 1 1/2 BH C/S	4
19	580112	CYL LOCK LEVER ASSEMBLY T45	2
20	842160	BACK TUBE PNTD T45	2
21	561016	1" WASHER 5/16" HOLE	4
22	560800	FRAME BUSHING T45/P3N	16
23	501024	FIXED BACK PIVOT PLATE	4
24	226195	5/16-18 x 1.82 BH C/S	8
25	341512	10/32 x .080 - .130 RIVNUT ZN	6
26	262100-QU	1/4 AN WASHER FLAT	4
27	226140	1/4-28 x 1 3/4 BH C/S	2
28	481023	S/A LATCH STUD NEW	4
29	551310	LATCH STUD SUPPORT BLK	2
30	201100-QU	1/4-28 NYLOCK NUT THIN	1
31	342056	CYL LOCK CABLE ASSEMBLY T45	2
7,8,21-24	880012	CONVERSION KIT FIXED BACK T45	
10,28-30	921295	S/A LATCH ASSEMBLY W/BOLT BLK	