

INSTRUCTION SHEET

IRIS TRANSIT KIT INSTALLATION

(Please read and understand instructions before beginning installation)

Tools Required:

- 3/16" hex key
- 1/4" hex key
- 1/2" end wrench
- 7/16" end wrench
- 7/16" socket
- Torque Wrench
- Vise Grips

Parts Required:

- Quickie IRIS Transit Kit (Fig1)
- (Sunrise Part Number 109322)



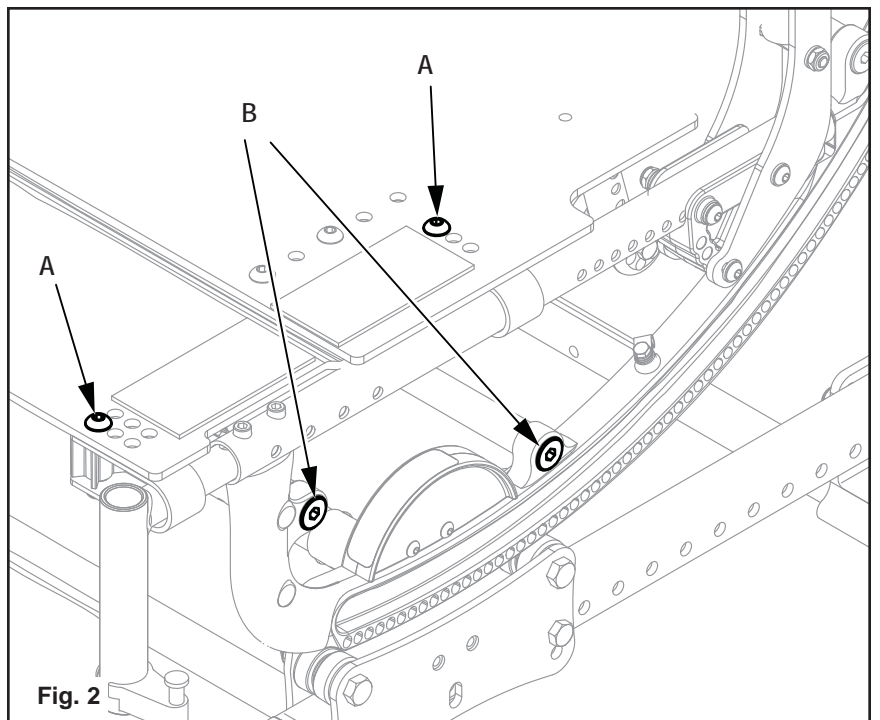
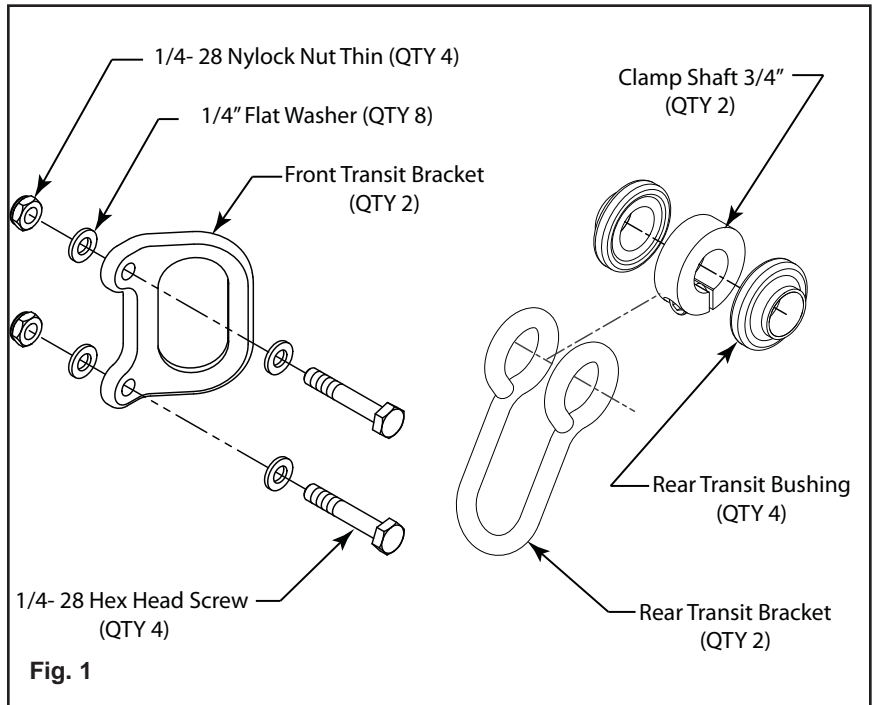
Failure to carefully read, understand and follow these instructions could result in severe injuries or death.

Please read and understand these instructions before beginning the installation.

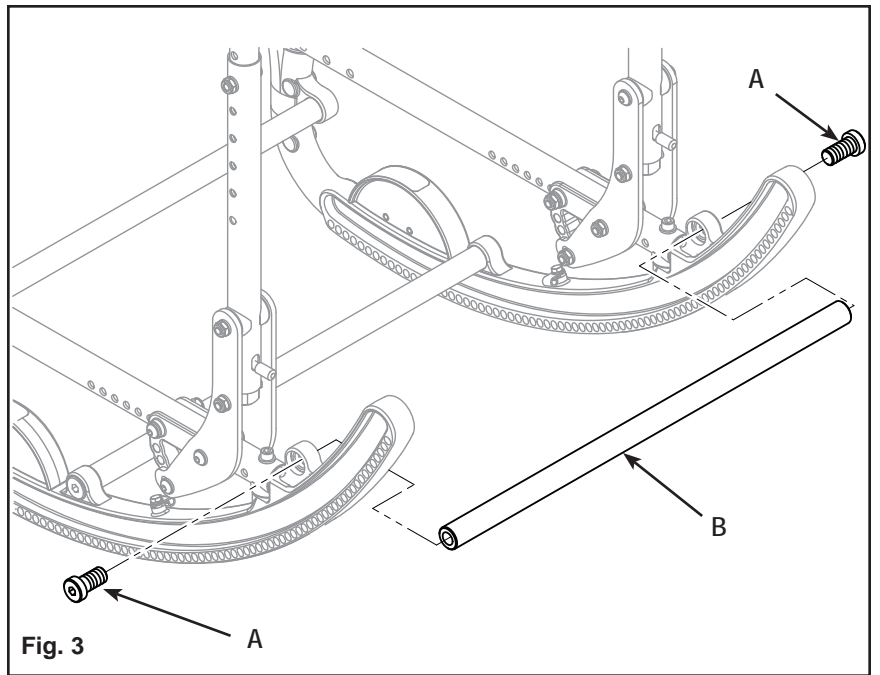
Before beginning the installation, make sure that all the parts are included (Fig1).

Installation Procedure:

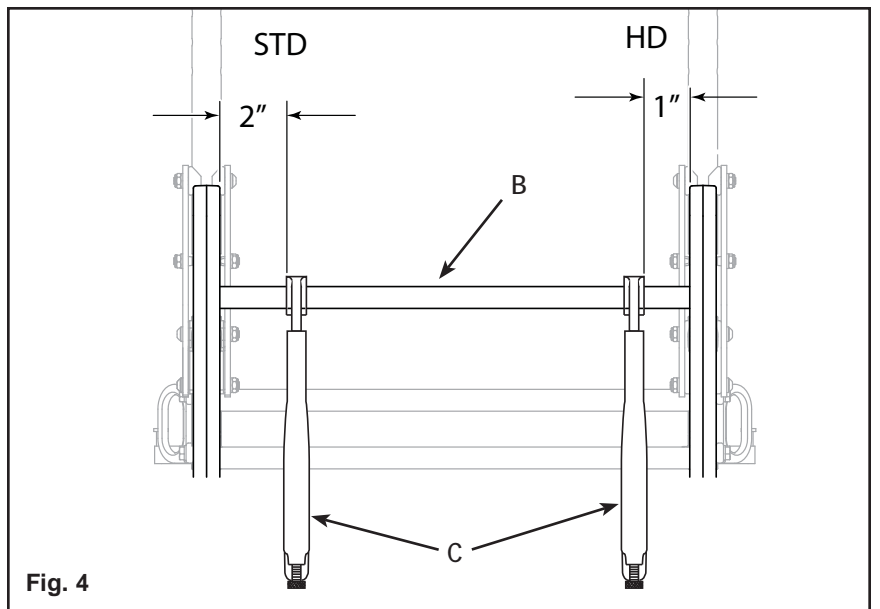
- 1) Remove Rear Wheels, Seat Pad or third party seating system, and any Back.
- 2) Using a 3/16 hex key and a 1/2" end wrench, loosen the seat pan clamp bolts and nuts (A) two or three turns on one side only (Fig.2)
- 3) Using a 1/4 hex key loosen the Front and middle Strut Bolts (B) on the same side of the chair as in step 2 (Fig.2).



- 4) Using a 1/4 allen wrench remove both bolts (A) holding the Rear Rocker Strut (B) in place (Fig. 3). Spread the Rocker Arms apart and remove the Rear Rocker Strut (B)



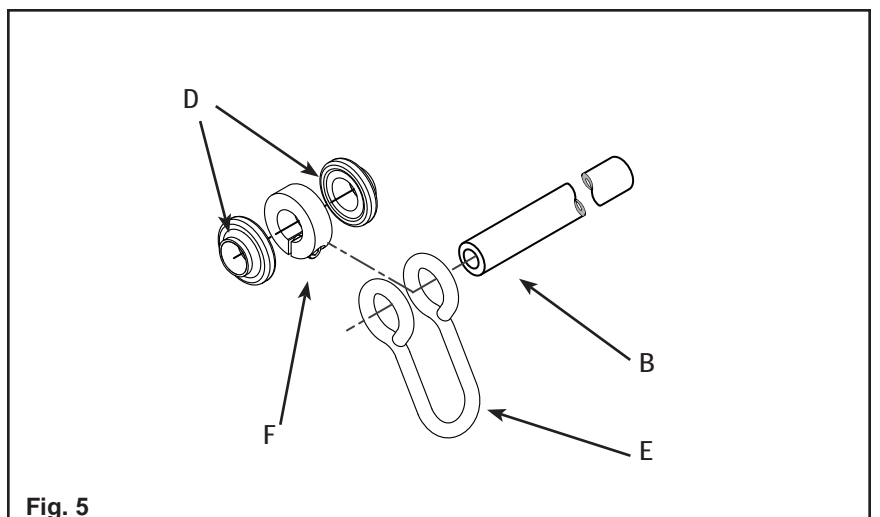
Note: It may be necessary to hold the strut with a pair of vise grips (C) to remove the bolts (Fig 4). If so, attach the vise grips to the strut at a point 2" (1" for the Heavy Duty option) away from the inside of the rocker then any marring of the tube will be covered by the transit bracket when it is attached.



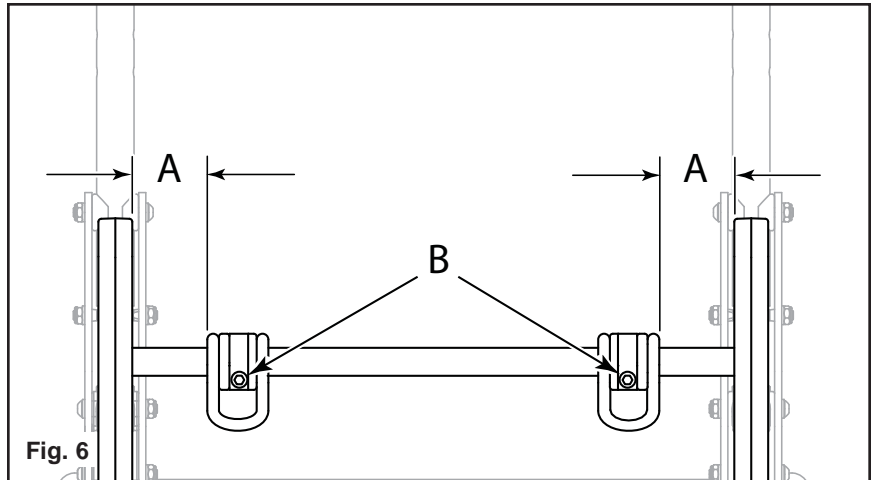
- 5) Insert the two plastic Transit Bushings (D) into either side of the Transit Bracket Loop (E) then slide the Tube Clamp 3/4 (F) in between the two plastic bushings. Next slide the whole assembly onto the Rear Rocker Strut (B). Repeat for the second rear bracket assembly. (Fig 5)

Re-install the Rear Strut Tube (B) and tighten the bolts to 120 in/lbs (A) (Fig.3).

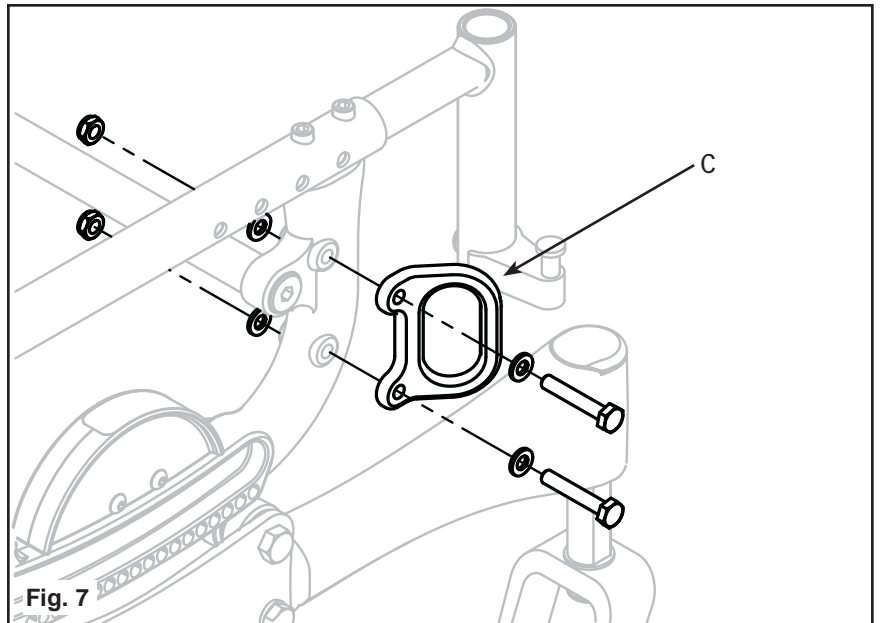
Tighten the middle and front strut bolts (B of Fig.2). Tighten any seat bolts that were loosened (A of Fig.2).



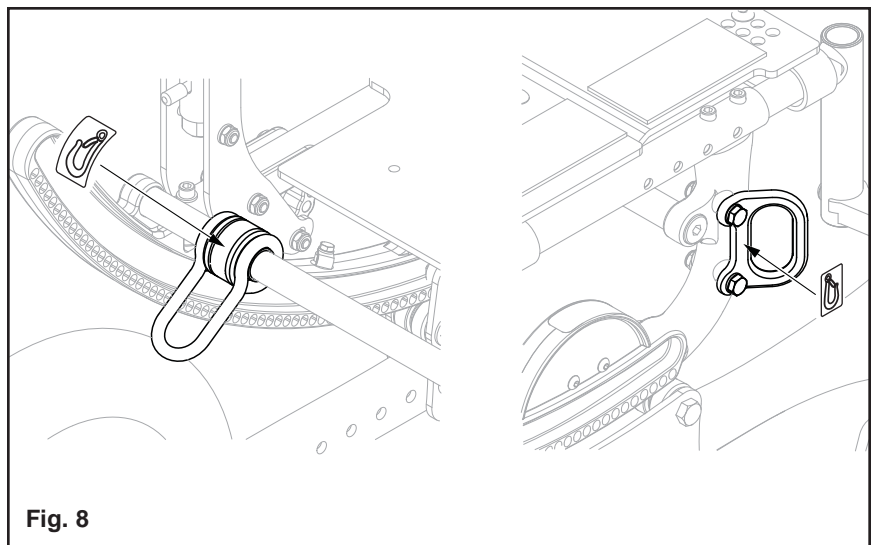
6) For standard chairs position the rear Transit Brackets so there is a 2" gap (A) between the inside surface of the Rocker and the Rear Transit Bracket. For Heavy Duty Chairs, position the Rear Transit Bracket so there is a 1" gap (A) between the Rocker and the Rear Transit Bracket. Then tighten both socket head cap screws (B) with a 3/16 allen to 120 in/lbs. (Fig 6)



7) Using a 7/16" end wrench and a 7/16" socket wrench, attach the Front Transit Bracket with the 1/4-28 fasteners (Fig.7). The Loop of the Bracket (C) will be pointing forward and out. Tighten the nylock nuts and hex bolt to 120 in/lbs.



8) Affix the four transit decals as shown in Fig 8. (2 per side)



9) Re-install Rear Wheels, Seat pad, Armrests and Back to the chair.