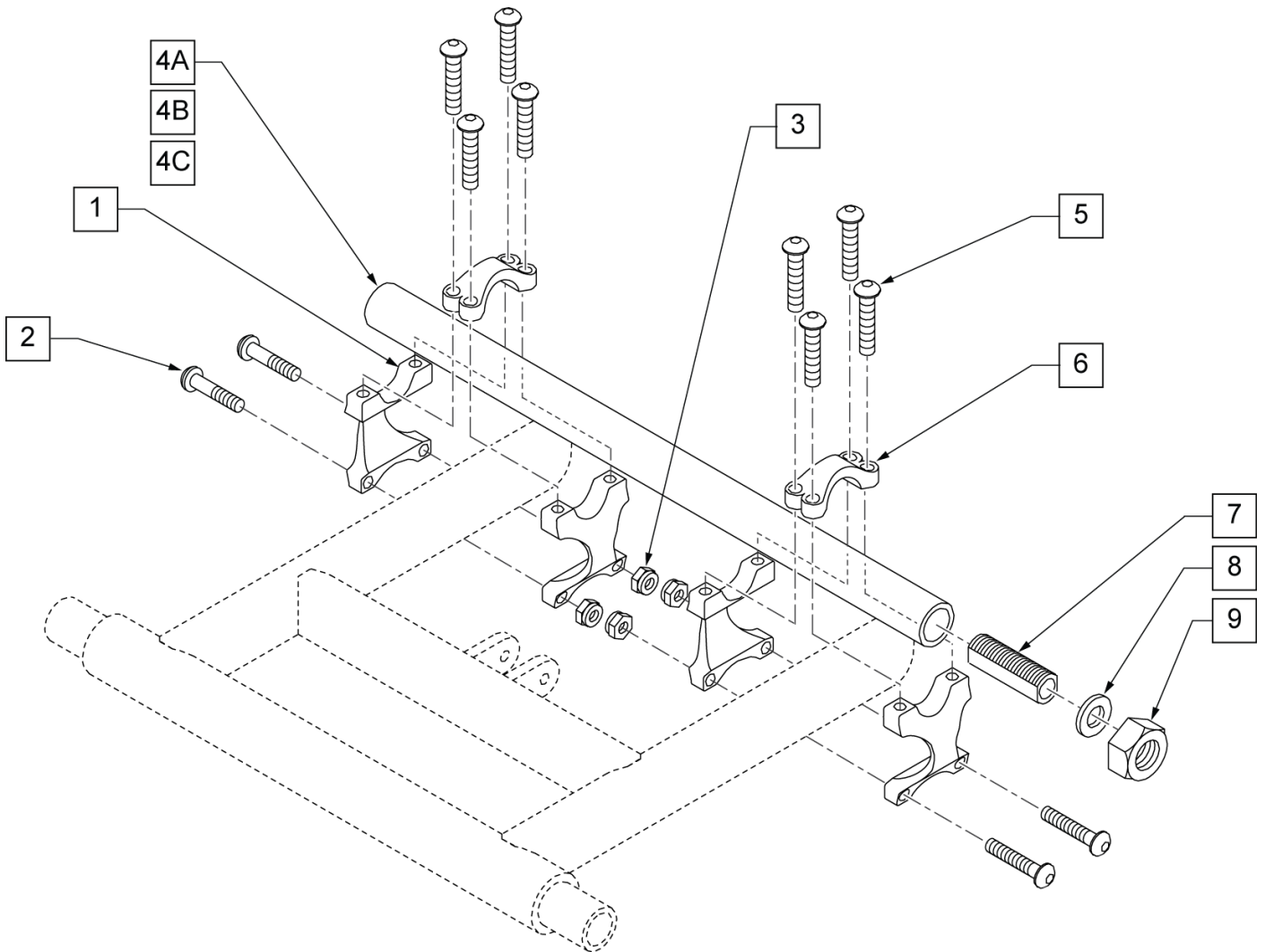


NOTE: Effective on GT chairs after S/N R3-012700 & R3A-012762.



Pos.	Item Number	Description	Remarks
1	506150	SWING ARM CLAMP XTR	
2	226066	1/4-28 x 1.1" BH C/S BLK	
3	106935	NUT NYLOCK THIN 1/4 -28 ROHS	
4A	525200	14" CAMBER TUBE 0 DEG	14" Wide 0° Camber
4A	525201	15" CAMBER TUBE 0 DEG	15" Wide 0° Camber
4A	525202	16" CAMBER TUBE 0 DEG	16" Wide 0° Camber
4A	525203	17" CAMBER TUBE 0 DEG	17" Wide 0° Camber
4A	525204	18" CAMBER TUBE 0 DEG	18" Wide 0° Camber
4A	525205	19" CAMBER TUBE 0 DEG	19" Wide 0° Camber
4A	525206	20" CAMBER TUBE 0 DEG	20" Wide 0° Camber
4B	525210	CAMBER TUBE 4 DEG 14" REVOLU	14" Wide 4° Camber
4B	525211	CAMBER TUBE 4 DEG 15" REVOLU	15" Wide 4° Camber
4B	525212	CAMBER TUBE 4 DEG 16" REVOLU	16" Wide 4° Camber
4B	525213	CAMBER TUBE 4 DEG 17" REVOLU	17" Wide 4° Camber
4B	525214	CAMBER TUBE 4 DEG 18" REVOLU	18" Wide 4° Camber

Pos.	Item Number	Description	Remarks
4B	525215	CAMBER TUBE 4 DEG 19" REVOLU	19" Wide 4° Camber
4B	525216	CAMBER TUBE 4 DEG 20" REVOLU	20" Wide 4° Camber
4C	525220	CAMBER TUBE 8 DEG 14" REVOLU	14" Wide 8° Camber
4C	525221	CAMBER TUBE 8 DEG 15" REVOLU	15" Wide 8° Camber
4C	525222	CAMBER TUBE 8 DEG 16" REVOLU	16" Wide 8° Camber
4C	525223	CAMBER TUBE 8 DEG 17" REVOLU	17" Wide 8° Camber
4C	525224	CAMBER TUBE 8 DEG 18" REVOLU	18" Wide 8° Camber
4C	525225	CAMBER TUBE 8 DEG 19" REVOLU	19" Wide 8° Camber
4C	525226	CAMBER TUBE 8 DEG 20" REVOLU	20" Wide 8° Camber
5	226078	1/4-20 x 3/4 BH C/S W/PATCH	
6	506152	AXLE CLAMP XTR	
7	481069	AXLE SLEEVE 1°	
8	116570	WASHER FLAT 3/4 X 1.25 BLK ZNC	
9	116569	NUT HEX 3/4-16 BLACK ZINC	
7,8,9	920114	AXLE SLEEVE 1° W/HARDWARE	
1-3,5,6	880927	AXLE CLAMP ASSEMBLY XTR	